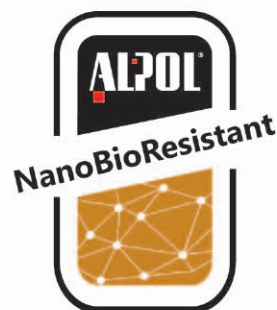


ALPOL®

PROFESJONALNA CHEMIA BUDOWLANA

PRODUCT CATALOGUE



CONTENTS

MASONRY MORTARS	3
Universal mortars	3
Thin-layer mortars	4
Clinker mortars	6
Special purpose mortars	7
Clinker nano-grouts	8
Nano-mortar for high absorption hand-formed bricks	8
JOINT GROUTS AND SILICONE PRODUCTS	9
PLASTERS	10
Traditional internal plasters	10
Traditional external plasters	12
Mineral decorative plasters	14
Acrylic, silicate-silicone and silicone decorative plasters	16
Mosaic, sandstone and granite stone decorative plasters	18
FLOORS	19
ADHESIVES	21
Cladding adhesives	21
Adhesives for thermal insulation systems	24
PAINTS	26
PRIMERS	28
WATERPROOFING PRODUCTS	31
IMPREGNATING AND CLEANING AGENTS	34
POLYMER COMPOUNDS	35
GYPSUM, ADHESIVES, PUTTY, GYPSUM FINISH COATS	35
GYPSUM PLASTERS	37
HYDRATED LIME	38
CEMENT	39
THERMAL INSULATION SYSTEMS	41
ALPOL EKO PLUS, ALPOL EKO PLUS WM, ALPOL STROP WM	41
CLINKER NANO-SYSTEMS	42
EXAMPLE OF CLINKER NANO-SYSTEM – BRICKLAYING WITH FULL JOINTS, – ERECTING FENCING POSTS, – FIXING AND GROUTING CLINKER TILES	42
WATERPROOFING SYSTEMS	43
ALPOL HYDRO PLUS, ALPOL HYDRO PLUS T, ALPOL AQUA PLUS	43
COLOUR CHARTS	44
ALPOL COLOR CHART	45
ALPOL MOSAIC CHART	46
ALPOL EXPRESS CHART	47
CREATIVO CHART	47
ALPOL AI 785 COLOURING IMPREGNATING AGENT CHART	47

UNIVERSAL MORTARS

25 kg
bag

1200 kg
pallet 48 bags

Lime-cement masonry mortar class M 2.5 / type G

Applications

Conventional general-purpose mortar for construction of walls made of bricks, concrete and ceramic blocks, and other masonry components. Recommended for all masonry work, except for structural walls. Joint thickness should not exceed 20 mm. Intended for interior use.

Coverage

Approximately 40 kg/m² with 10 mm joint for masonry works at ½ of full brick thickness (12 cm) and approx. 100 kg/m² with 10 mm joint for masonry works at 1 full brick thickness (25 cm).

AZ
101



25 kg
bag

1200 kg
pallet 48 bags

Cement-lime masonry mortar class M 5 / type G

Applications

Conventional general-purpose mortar for construction of walls made of bricks, concrete and ceramic blocks, and other masonry components. The joint thickness should not exceed 20 mm. Suitable for indoor and outdoor use.

Coverage

Approximately 40 kg/m² with 10 mm joint for masonry works at ½ of full brick thickness (12 cm) and approx. 100 kg/m² with 10 mm joint for masonry works at 1 full brick thickness (25 cm).

AZ
102



25 kg
bag

1200 kg
pallet 48 bags

Cement masonry mortar class M 10 / type G

Applications

Conventional general-purpose mortar for construction of walls made of bricks, concrete and ceramic blocks, and other high-load masonry components. Joint thickness should not exceed 20 mm. Intended for interior and exterior use.

Coverage

Approximately 40 kg/m² with 10 mm joint for masonry works at ½ of full brick thickness (12 cm) and approx. 100 kg/m² with 10 mm joint for masonry works at 1 full brick thickness (25 cm).

AZ
103



25 kg
bag

1200 kg
pallet 48 bags

Cement masonry mortar class M 15 / type G

Applications

Conventional general-purpose heavy-duty mortar for construction of walls made of bricks, concrete and ceramic blocks, and other masonry components. Also suitable for concrete filling and repairs. Joint thickness should not exceed 20 mm. Intended for interior and exterior use.

Coverage

Approximately 40 kg/m² with 10 mm joint for masonry works at ½ of full brick thickness (12 cm) and approx. 100 kg/m² with 10 mm joint for masonry works at 1 full brick thickness (25 cm).

AZ
104



THIN-LAYER MORTARS

AZ
110



Thin-layer masonry mortar for silicate blocks, white class M 10 / type T

25 kg
bag

1200 kg
pallet 48 bags

Applications

For construction with thin joint of structural and partition walls of bricks and silicate blocks, inside and outside buildings. Joint thickness: between 1 and 3 mm.

Coverage

Approximately 2.5 kg/m² with 2 mm joints for 12 cm walls made of 12 × 20 × 24 cm blocks.

AZ
111



Thin-layer strong masonry mortar for silicate blocks, white class M 15 / type T

25 kg
bag

1200 kg
pallet 48 bags

Applications

For construction with thin joint of bricks and silicate blocks (especially indented for structural walls subjected to heavy load). Intended for interior and exterior use. Joint thickness: between 1 and 3 mm.

Coverage

Approximately 2.5 kg/m² with 2 mm joints for 12 cm walls made of 12 × 20 × 24 cm blocks.

AZ
112



Thin-layer masonry mortar for silicate blocks, grey class M 10 / type T

25 kg
bag

1200 kg
pallet 48 bags

Applications

For construction with thin joint of structural and partition walls of bricks and silicate blocks, inside and outside buildings. Joint thickness: between 1 and 3 mm.

Coverage

Approximately 2.5 kg/m² with 2 mm joints for 12 cm walls made of 12 × 20 × 24 cm blocks.

AZ
113



Thin-layer masonry mortar for silicate blocks, grey class M 5 / type T

25 kg
bag

1200 kg
pallet 48 bags

Applications

For construction with thin joint of structural and partition walls of bricks and silicate blocks, inside and outside buildings. Joint thickness: between 1 and 3 mm.

Coverage

Approximately 2.5 kg/m² with 2 mm joints for 12 cm walls made of 12 × 20 × 24 cm blocks.

THIN-LAYER MORTARS

25 kg
bag
1200 kg
pallet 48 bags

Thin-layer masonry mortar for cellular concrete, grey class M 5 / type T

Applications

For construction with thin joint of structural and partition walls made of cellular concrete blocks, keramsite concrete and silicate blocks. It can also be used for laying walls made from other absorbing masonry components. Intended for interior and exterior use. Joint thickness between 1 and 3 mm.

Coverage

Approximately 2.5 kg/m² with 2 mm joint for masonry works with 12 × 20 × 24 cm blocks and approximately 4 kg/m² with 2 mm joint for masonry works with 49 × 24 × 24 cm blocks..

AZ
114



25 kg
bag
1200 kg
pallet 48 bags

Thin-layer masonry mortar for cellular concrete, grey class M 10 / type T

Applications

For construction with thin joint of structural and partition walls made of cellular concrete blocks, keramsite concrete and silicate blocks. It can also be used for laying walls made from other absorbing masonry components. Intended for interior and exterior use. Joint thickness between 1 and 3 mm.

Coverage

Approximately 2.5 kg/m² with 2 mm joint for masonry works with 12 × 20 × 24 cm blocks and approximately 4 kg/m² with 2 mm joint for masonry works with 49 × 24 × 24 cm blocks.



AZ
115



25 kg
bag
1200 kg
pallet 48 bags

Thin-layer masonry mortar for cellular concrete, white class M 10 / type T

Applications

For construction with thin joint of structural and partition walls made of cellular concrete light-colour blocks, keramsite concrete and silicate blocks. It can also be used for laying walls made from other absorbing masonry components. Intended for interior and exterior use. Joint thickness: between 1 and 3 mm.

Coverage

Approximately 2.5 kg/m² with 2 mm joint for masonry works with 12 × 20 × 24 cm blocks and approximately 4 kg/m² with 2 mm joint for masonry works with 49 × 24 × 24 cm blocks.

AZ
116



25 kg
bag
1200 kg
pallet 48 bags

Thin layer masonry mortar INTENDED FOR WINTER USE for cellular concrete and silicate blocks, white class M 15 / type T

Applications

For construction with thin joint of structural and partition walls made of cellular concrete blocks, bricks and silicate blocks. It can also be used for laying walls made from other absorbing masonry components. Especially recommended for masonry works in light winter conditions, at the air temperature close to 0°C. For interior and exterior use. Joint thickness: between 1 and 3 mm.

Coverage

Approximately 2.5 kg/m² with 2 mm joint for masonry works with 12 × 20 × 24 cm blocks and approximately 4 kg/m² with 2 mm joint for masonry works with 49 × 24 × 24 cm blocks.

AZ
117



THIN-LAYER MORTARS

AZ
118



**Thin layer masonry mortar INTENDED FOR WINTER USE
for cellular concrete and silicate blocks, white
class M 10 / type T**

Applications

For construction with thin joint of masonry walls, columns and walls of masonry load-bearing structures and constructions not carrying the burden. Especially recommended for masonry works in light winter conditions, at the air temperature close to 0°C. For interior and exterior use. Joint thickness: between 1 and 3 mm.

Coverage

Approximately 2.5 kg/m² with 2 mm joint for masonry works with 12 × 20 × 24 cm blocks and approximately 4 kg/m² with 2 mm joint for masonry works with 49 × 24 × 24 cm blocks.

25 kg
bag
1200 kg
pallet 48 bags

CLINKER MORTARS

AZ
120-126

**Clinker nano-mortar
class M 10 / type G**

Applications

Coloured mortar for laying and grouting walls made of face bricks and for laying structural walls, chimneys, fencing, foundations, and walls made of clinker bricks. The mortar can also be used for grouting joints up to 30 mm wide, between bricks and façade tiles. Thanks to the use of nano-additives, the mortar is highly resistant to salt efflorescence. Intended for interior and exterior use.

Coverage

Approximately 35 kg/m² with 10 mm joint for masonry works at 1/2 of full brick thickness (12 cm) and approx. 85 kg/m² with 10 mm joint for masonry works at 1 full brick thickness (25 cm).

25 kg
bag
1200 kg
pallet 48 bags



AZ 120 graphite AZ 121 grey AZ 122 brown AZ 123 red AZ 124 light-grey AZ 125 black AZ 126 sand



AZ
129



**Clinker nano-concrete
class M 10 / typ G**

Applications

Grey mortar for filling clinker and other masonry structures made of ceramic, sand-lime bricks and concrete blocks. Thanks to the use of nano-additives, the mortar is highly resistant to salt mist, and the addition of a superplasticizer gives it a self-thickening effect. This chloride-free product causes no corrosion of reinforcing steel. Frost resistant.

Coverage

1,800 kg/m³ (1 post = approx. 2 bags).

25 kg
bag
1200 kg
pallet 48 bags



SPECIAL MORTARS

25 kg
bag

Quick-setting mortar

class M 15 / typ G

1200 kg
pallet 48 bags

Applications

For rapid repairs of concrete, reinforced concrete and masonry building structures. For treating small damages of mineral plasters and repairs of cement underlay and floors. Due to high strength and short setting time, the mortar is suitable for setting bolts in foundations, columns in bell footing, and for masonry works in lower temperatures (however, above 0°C). Intended for interior and exterior use.

Coverage

Approximately 17 kg/m²/cm.

AZ
130



25 kg
bag

Quick-setting fixing mortar

class M 15 / type G

1200 kg
pallet 48 bags

Applications

For quick fixing of balustrades, fencing posts, foundation bolts and other steel, concrete and reinforced concrete components. For patching small damages in concrete components, cement underlay and floors, as well as for repairs of building concrete and reinforced concrete structures. Intended for interior and exterior use.

Coverage

Depending on particular use.

AZ
131



5 kg
small bag

20 kg
package 4 bags

25 kg
bag

Levelling mortar

class M 20 / type G

CT-C20-F6

1200 kg
pallet 48 bags

Applications

For levelling any types of substrates to be tiled and for profiling slopes and making pressure layers. Joint thickness should not exceed 50 mm. Can be used for patching small damages in concrete, reinforced concrete and masonry structures, mineral plasters and for repairing cement underlay and floors. Intended for interior and exterior use.

Coverage

Approximately 18.5 kg/m² with 10 mm layers.

AZ
135



20 kg
bag

Masonry mortar – warm

class M 5 / type L

640 kg
pallet 32 bags

Applications

For construction of walls made of various bricks and ceramic blocks, cellular concrete blocks and other masonry components, wherever thermal bridges must be removed. Intended for interior and exterior use. Recommended joint thickness: between 10 and 20 mm.

Coverage

Approximately 24 kg/m² with 10 mm joints for 44 cm walls made of porous ceramic components (P+W) of 44 × 25 × 23.8 cm.

Z
142



SPECIAL MORTARS

AZ
145



Glass brick adhesive – white class M 10 / type G

Applications

For construction and grouting of walls made of glass bricks. Intended for interior and exterior use. Recommended joint thickness: between 10 and 20 mm.

Coverage

Approximately 18 kg/m²/cm.

25 kg
bag

1200 kg
pallet 48 bags

5 kg
small bag

20 kg
package 4 bags

CLINKER NANO-GROUT

AZ
150÷156



Clinker nano-grout from 3 to 10 mm class M 10 / type G

Applications

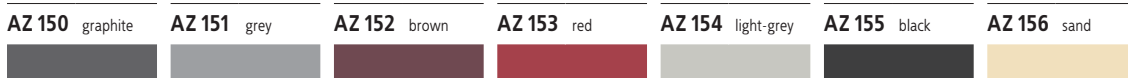
Coloured, fine grout for pointing masonry work, fences, wall bases, façades, chimneys of clinker bricks, clinker façade tiles, and for filling joints between cladding elements of natural (except for marble) or artificial stone, between 3 and 10 mm in width. Thanks to the use of nano-additives, the nano-grout is highly resistant to salt efflorescence. Should not be used in aggressive conditions and under water. Intended for interior and exterior use.

Coverage

Between 0.9 and 2.8 kg/m² depending on the size and type of clinker tiles used.

20 kg
bag

1120 kg
pallet 56 bags



Gold medal QI 2012



TOP BUILDER 2009 AWARD



NanoTechnology

salt efflorescence build-up prevention

NANO-MORTAR FOR HIGH ABSORPTION HAND-FORMED BRICKS

AZ
160÷166



Nano-mortar for high absorption hand-formed bricks class M 10 / type G

Applications

Coloured mortar for masonry walls of hand-formed and face bricks with high absorption, with simultaneous jointing and for building components subjected to high loads, chimneys, fences etc. The mortar can also be used for grouting joints up to 30 mm wide between bricks and façade tiles. Thanks to the use of nano-additives, the mortar is highly resistant to salt efflorescence. Intended for interior and exterior use.

Coverage

Approximately 35 kg/m² with 10 mm joint for masonry works at 1/2 of full brick thickness (12 cm) and approx. 85 kg/m² with 10 mm joint for masonry works at 1 full brick thickness (25 cm).

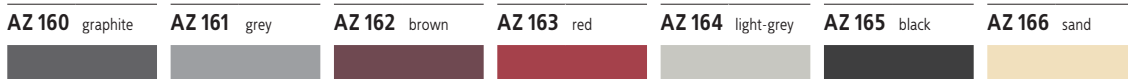


The only patent-protected
clinker product line in Europe



NanoTechnology

salt efflorescence build-up prevention



JOINT GROUTS AND SILICONE PRODUCTS

5 kg
bucket

20 kg
package 4 buckets

2 kg
bucket

20 kg
package 10 buckets

ALPOL ELITE flexible grout from 2 to 20 mm type CG2WA

Applications

Intended for filling joints from 2 to 20 mm in width, between tiles of various water absorption: porcelain tiles of water absorption at < 0.5 %, glazed and terracotta tiles with absorption at > 10 %, on conventional and deformable surfaces, i.e. heated, terraces, balconies, façades, etc. Also suitable for filling joints between mosaic, natural and artificial stone cladding as well as glass tiles. Milk opal grout is recommended for pointing marble tiles. Intended for interior and exterior use. Do not use in aggressive conditions.

Coverage

Between 0.3 and 2.3 kg/m² depending on the joint width and tile size.

AS
E51-E65



AS E51	anthracite		AS E57	tiger's eye	
AS E52	smoky quartz		AS E62	imperial topaz	
AS E53	chalcedony		AS E63	desert rose	
AS E54	striped flint		AS E64	moonstone	
AS E56	bronzite		AS E65	milk opal	

300 ml
cartridge

3,6 l
box 12 cartridges

Silicon ALPOL ELITE from 4 to 25 mm

Applications

For grouting joints from 4 to 25 mm in width between ceramic claddings in sanitary rooms, e.g. in bathrooms, kitchens, shower cabins, showers, laundry rooms and other areas subject to higher humidity. Especially recommended for use where high joint flexibility is required, e.g.: wall edges, wall-to-floor joints and expansion joints. Also suitable for filling gaps at sanitary appliances, e.g. those located around bathtubs, shower trays, wash basins, as well as kitchen furniture, air ducts and sanitary and heating pipes. Intended for interior and exterior use.

Yield

Between 0.9 and 13 m from one cartridge (300 ml) depending on the joint width and depth.

AS
S51-S65



AS S51	anthracite		AS S57	tiger's eye	
AS S52	smoky quartz		AS S62	imperial topaz	
AS S53	chalcedony		AS S63	desert rose	
AS S54	striped flint		AS S64	moonstone	
AS S56	bronzite		AS S65	milk opal	

Warning! For reasons of printing, the differences in colors of joints and silicones in comparison to the original are permissible.

JOINT GROUTS AND SILICONE PRODUCTS

AS
210-279



Grout for narrow joints from 2 to 6 mm type CG2WA

Applications

For grouting joints from 2 to 6 mm between various ceramic and stone tiles (except for marble tiles) on stable substrates. Intended for interior and exterior use. Should not be used in aggressive conditions and under water.

Coverage

Between 0.4 and 0.8 kg/m² depending on the joint width and tile size.

AS 210	anthracite		AS 276	tiger's eye	
AS 211	smoky quartz		AS 277	imperial topaz	
AS 213	chalcedony		AS 278	desert rose	
AS 215	striped flint		AS 279	moonstone	
AS 275	bronzite		AS 230	milk opal	

5 kg

bucket

20 kg

package 4 buckets

2 kg

bucket

20 kg

package 10 buckets

AS
200-266



Grout for wide joints from 7 to 12 mm type CG2W

Applications

For grouting joints of 7 to 12 mm between various ceramic and stone tiles (except for marble tiles) on stable substrates. Intended for interior and exterior use. Should not be used in aggressive conditions and under water.

Coverage

Between 0.7 and 1.2 kg/m² depending on the joint width and tile size.

AS 200	anthracite		AS 220	milk opal	
AS 202	smoky quartz		AS 265	bronzite	
AS 204	chalcedony		AS 266	tiger's eye	

25 kg

bag

1200 kg

pallet 48 bags

5 kg

bucket

20 kg

pakiet 4 buckets

Warning! For reasons of printing, the differences in colors of joints and silicones in comparison to the original are permissible.

TRADITIONAL INTERNAL PLASTERS

AT
300



Grey cement-lime plaster applied by hand type GP, W0, class CS I

Applications

For manually applied internal plaster coatings of surface class III and CS I compressive strength, on walls and ceilings, regardless of humidity inside rooms. Provides an ideal underlay for ceramic lining, decorative plaster, finish coat and paint. Recommended plaster coating thickness: between 10 and 20 mm. Granularity up to 1.0 mm.

Coverage

Approximately 1.5-1.6 kg/m²/mm.

25 kg

bag

1200 kg

pallet 48 bags

TRADITIONAL INTERNAL PLASTERS

30 kg
bag
1080 kg
pallet 36 bags

Grey cement-lime plaster for machine application type GP, W0, class CS I

Applications

For machine application of internal plaster coatings of surface class III and CS I compressive strength, on walls and ceilings, regardless of humidity inside rooms. Provides an ideal underlay for ceramic lining, decorative plaster, finish coat and paint. With its fungus-resistant properties, especially recommended for demanding sanitary areas. Recommended plaster coating thickness: between 8 and 25 mm. The plaster can also be applied by hand. Granularity up to 1.0 mm.

Coverage

Approximately 1.4 kg/m²/mm.

AT
301



30 kg
bag
1080 kg
pallet 36 bags

Grey lightweight cement-lime plaster for machine application type LW, W0, class CS I

Applications

For machine application of internal plaster coatings of surface class III and CS I compressive strength, on walls and ceilings, regardless of humidity inside rooms. Provides an ideal underlay for ceramic lining, decorative plaster, finish coat and paint. With its fungus-resistant properties, especially recommended for demanding sanitary areas. Recommended plaster coating thickness: between 8 and 25 mm. The plaster can also be applied by hand. Granularity up to 1.0 mm.

Coverage

Approximately 1.1 kg/m²/mm.

AT
301 L



30 kg
bag
1080 kg
pallet 36 bags

Grey lime-cement thin-coat plaster for machine application type GP, W0, class CS I

Applications

For machine application of thin-coat internal plaster coatings of surface class III and CS I compressive strength, on walls and ceilings, regardless of humidity inside rooms. Recommended as a topcoat for multi-layer plasterwork. Provides an excellent underlay for ceramic lining, decorative plaster, finish coat and paint. With its fungus-resistant properties, especially recommended for demanding sanitary areas. Recommended plaster coating thickness: between 3 and 8 mm. The plaster can also be applied by hand. Granularity up to 0.5 mm.

Coverage

Approximately 1.3 kg/m²/mm.

AT
302



30 kg
bag
1080 kg
pallet 36 bags

Grey underlay plaster for machine application type GP, W0, class CS IV

Applications

For machine application of scratch coat or underlay of CS IV compressive strength for cement, cement-lime and lime plaster coatings, inside and outside buildings. Recommended as an underlay for ALPOL AT 300, ALPOL AT 301, ALPOL AT 302, ALPOL AT 310 or ALPOL AT 311 plasters. The plaster can also be applied by hand. Granularity up to 1.6 mm.

Coverage

Approximately 8 kg/m².

AT
303



TRADITIONAL INTERNAL PLASTERS

AT
304



White lightweight lime thin-coat plaster for machine application type LW, W0, class CS I



Applications

For machine application of thin-coat white internal plaster coatings of surface class III and CS I compressive strength, on walls and ceilings, regardless of humidity inside rooms. Especially recommended for walls made of absorbing silicate materials and cellular concrete without the need of priming or applying scratch coat, and as a top coat on multi-layer plasterwork. Provides an ideal underlay for ceramic lining, decorative plaster, finish coat and paint. With its fungus-resistant properties, especially recommended for demanding sanitary areas. Recommended plaster coating thickness: between 2 and 6 mm. The plaster can also be applied by hand. Granularity up to 0.4 mm.

Coverage

Approximately 1 kg/m²/mm.

30 kg
bag

1080 kg
pallet 36 bags

AT
306



Grey lightweight lime-cement plaster for machine application type LW, W0, class CS II



Applications

For machine application of internal plaster coatings of surface class III and CS II compressive strength, on walls and ceilings, regardless of humidity inside rooms. Recommended especially for walls made of absorbing silicate materials and cellular concrete without the need of priming or applying scratch coat. Provides an excellent underlay for finish coat, paint and other decorative coats. With its fungus-resistant properties, especially recommended for demanding sanitary areas. Recommended plaster coating thickness: between 8 and 25 mm. The plaster can also be applied by hand. Granularity up to 1.0 mm.

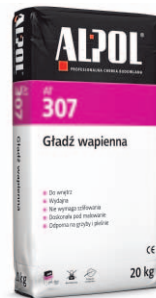
Coverage

Approximately 1 kg/m²/mm.

30 kg
bag

1080 kg
pallet 36 bags

AT
307



Lime finish coat type GP, W0, class CS I



Applications

For application of finish coats on 1 to 3 mm thick lime, cement-lime and cement plaster, and on concrete surfaces. Recommended both for dry and moist areas. Excellent for refreshment of old, stable plasterwork. Requires no initial priming. For wet manual trowelling, with no need of sanding. Provides an excellent underlay for paints or wallpapers. With its fungus-resistant properties, especially recommended for demanding sanitary areas. For hand or machine application. Especially recommended for application with the use of hydrodynamic units. Intended for interior use.

Coverage

Approximately 1.1 kg/m²/mm.

20 kg
bag

960 kg
pallet 48 bags

TRADITIONAL EXTERNAL PLASTERS

AT
310



Grey cement-lime plaster applied by hand type GP, W2, class CS II

Applications

For manually applied internal and external plaster coatings of surface class III and CS II compressive strength, on walls and ceilings, regardless of humidity inside rooms. Recommended for coating ground floor walls, foundations and plinths. Provides an excellent underlay for ceramic lining, decorative plaster, finish coat and paint. Recommended plaster coating thickness: between 10 and 20 mm. Granularity up to 1.0 mm.

Coverage

Approximately 1.5-1.6 kg/m²/mm.

25 kg
bag

1200 kg
pallet 48 bags

TRADITIONAL EXTERNAL PLASTERS

30 kg

bag

1080 kg

pallet 36 bags

Grey cement-lime plaster for machine application type GP, W2, class CS II

Applications

For machine application of internal and external plaster coatings of surface class III and CS II compressive strength, on walls and ceilings, regardless of humidity inside rooms. Provides an ideal underlay for ceramic lining, decorative plaster, finish coat and paint. With its fungus-resistant properties, especially recommended for demanding sanitary areas. Recommended plaster coating thickness: between 10 and 25 mm. The plaster can also be applied by hand. Granularity up to 1.0 mm.

Coverage

Approximately 1.3-1.4 kg/m²/mm.

AT
311



30 kg

bag

1080 kg

pallet 36 bags

White lime-cement plaster for machine application type GP, W2, class CS II

Applications

For machine application of internal and external white plaster coatings of surface class III and CS I compressive strength, on walls and ceilings, regardless of humidity inside rooms. Recommended especially for walls made of absorbing silicate materials and cellular concrete without the need of priming or applying scratch coat. Provides an ideal underlay for ceramic lining, decorative plaster, finish coat and paint. With its fungus-resistant properties, especially recommended for demanding sanitary areas. Recommended plaster coating thickness: between 10 and 25 mm. The plaster can also be applied by hand. Granularity up to 1.0 mm.

Coverage

Approximately 1.3 kg/m²/mm.

AT
312



30 kg

bag

1080 kg

pallet 36 bags

Grey lightweight lime-cement plaster for machine application type LW, W2, class CS II

Applications

For machine application of internal and external plaster coatings of surface class III and CS II compressive strength, on walls and ceilings, regardless of humidity inside rooms. Recommended especially for walls made of absorbing silicate materials and cellular concrete without the need of priming or applying scratch coat. Provides an excellent underlay for ceramic lining, decorative plaster, finish coat and paint. With its fungus-resistant properties, especially recommended for demanding sanitary areas. Recommended plaster coating thickness: between 10 and 30 mm. The plaster can also be applied by hand. Granularity up to 1.0 mm.

Coverage

Approximately 1 - 1.1 kg/m²/mm.

AT
316



25 kg

bag

1200 kg

pallet 48 bags

Grey cement finish coat type GP, W2, class CS IV

Applications

For making 1 to 3 mm thick finish coats on large concrete and reinforced concrete surfaces. Also suitable for filling gaps, pores, small cracks and defects on concrete, cement and cement-lime plaster surfaces, as well as for filling splays. Recommended both for dry and moist areas. For hand or machine application. Intended for interior and exterior use.

Coverage

Approximately 1.3 kg/m²/mm.

AT
317



TRADITIONAL EXTERNAL PLASTERS

AT
318



White cement finish coat type GP, W2, class CS IV

Applications

For applying white finish coats of 1 to 3 mm thick on large concrete and reinforced concrete surfaces. Also suitable for filling gaps, pores, small cracks and defects on concrete, cement and cement-lime plaster surfaces, as well as for filling splays. Recommended both for dry and moist areas. For hand or machine application. Intended for interior and exterior use.

Coverage

Approximately 1.3 kg/m²/mm.

25 kg

bag

1200 kg

pallet 48 bags

DECORATIVE MINERAL PLASTERS

AT
319



Mineral white textured plaster

Applications

For application of decorative thin-coat internal and external plaster coatings, e.g. for ALPOL EKO PLUS STANDARD and ALPOL EKO PLUS PREMIUM insulation systems. Proper combination of workability and fine granulation allows creating of original surface textures using various tools and stamps. In particular, the structure and colour of natural wood can be reproduced on a wall by impressions made in the plaster with a special silicone mould, followed by impregnation with ALPOL AI 785 colourant. The plaster can be also painted with ALPOL AF 640, ALPOL AF 660, ALPOL AF 680, ALPOL AF 685 façade paints or with ALPOL AF 610 and ALPOL AF 615 interior paints.

Coverage

From 2.5 to 5 kg/m² (depending on coat thickness)

25 kg

bag

1200 kg

pallet 48 bags

AT
320



White mineral dashed plaster 2 mm

Applications

For decorative thin-coat internal and external plaster coating (e.g. for ALPOL EKO PLUS thermal insulation systems using Styrofoam or ALPOL EKO PLUS WM using mineral wool). The plaster coating can be painted with ALPOL AF 640, ALPOL AF 660 or ALPOL AF 680 façade paints. For hand or machine application.

Coverage

Approximately 2.5 kg/m².

25 kg

bag

1200 kg

pallet 48 bags

AT
321



White mineral pitted plaster 2 mm

Applications

For decorative thin-coat internal and external plaster coating (e.g. for ALPOL EKO PLUS thermal insulation systems using Styrofoam or ALPOL EKO PLUS WM using mineral wool). The plaster coating can be painted with ALPOL AF 640, ALPOL AF 660 or ALPOL AF 680 façade paints.

Coverage

Approximately 3 kg/m².

25 kg

bag

1200 kg

pallet 48 bags

DECORATIVE MINERAL PLASTERS

25 kg

bag

1200 kg

pallet 48 bags

Ultra-white mineral pebble dashed plaster 1.5 mm

Applications

For decorative thin-coat internal and external plaster coating (e.g. for ALPOL EKO PLUS thermal insulation systems using Styrofoam or ALPOL EKO PLUS WM using mineral wool). The plaster coating can be painted with ALPOL AF 640, ALPOL AF 660 or ALPOL AF 680 façade paints. For hand or machine application.

Coverage

Approximately 2 kg/m².

AT

325



25 kg

bag

1200 kg

pallet 48 bags

Ultra-white mineral pebble dashed plaster 2 mm

Applications

For decorative thin-coat internal and external plaster coating (e.g. for ALPOL EKO PLUS thermal insulation systems using Styrofoam or ALPOL EKO PLUS WM using mineral wool). The plaster coating can be painted with ALPOL AF 640, ALPOL AF 660 or ALPOL AF 680 façade paints. For hand or machine application.

Coverage

Approximately 3 kg/m².

AT

326



25 kg

bag

1200 kg

pallet 48 bags

Ultra-white mineral pebble dashed plaster 2.5 mm

Applications

For decorative thin-coat internal and external plaster coating (e.g. for ALPOL EKO PLUS thermal insulation systems using Styrofoam or ALPOL EKO PLUS WM using mineral wool). The plaster coating can be painted with ALPOL AF 640, ALPOL AF 660 or ALPOL AF 680 façade paints.

Coverage

Approximately 3.5 kg/m².

AT

327



25 kg

bag

1200 kg

pallet 48 bags

Grey mineral dashed plaster 1.5 mm

Applications

For decorative thin-coat internal and external plaster coating (e.g. for ALPOL EKO PLUS thermal insulation systems using Styrofoam or ALPOL EKO PLUS WM using mineral wool). The plaster coating can be painted with ALPOL AF 640, ALPOL AF 660 or ALPOL AF 680 façade paints. For hand or machine application.

Coverage

Approximately 2.5 kg/m².

AT

330



DECORATIVE MINERAL PLASTERS

AT
336



Grey mineral pebble dashed plaster 2 mm

Applications

For decorative thin-coat internal and external plaster coating (e.g. for ALPOL EKO PLUS thermal insulation systems using Styrofoam or ALPOL EKO PLUS WM using mineral wool). The plaster coating can be painted with ALPOL AF 640, ALPOL AF 660 or ALPOL AF 680 façade paints. For hand or machine application.

Coverage

Approximately 3 kg/m².

25 kg
bag

1200 kg
pallet 48 bags

ACRYLIC, SILICATE-SILICONE AND NANO-SILICONE DECORATIVE PLASTERS

AT
350÷357



Acrylic Plaster



25 kg
bucket

600 kg
pallet 24 buckets

Coverage

AT 350 Acrylic dashed plaster spray 1 mm

approx. 1.7 kg/m²

Applications

For decorative thin-layer plastering inside and outside buildings (eg. for ALPOL EKO PLUS thermal insulation systems). The application features optimized specifically for the application of mechanical using spray guns or appropriate plastering machines. On smaller surfaces plaster can be applied manually. White or body-tinted version according to ALPOL COLOR chart.

Coverage

AT 351 Acrylic dashed plaster 1.5 mm

approx. 2.5 kg/m²

AT 352 Acrylic dashed plaster 2 mm

approx. 3.2 kg/m²

AT 357 Acrylic pitted plaster 2 mm

approx. 2.5 kg/m²

Applications

For decorative thin-layer plastering inside and outside buildings (eg. for ALPOL EKO PLUS thermal insulation systems). For hand application. Dashed plasters can be applied by means of mechanical spraying. White or body-tinted version according to ALPOL COLOR chart.

ACRYLIC, SILICATE-SILICONE AND NANO-SILICONE DECORATIVE PLASTERS

25 kg

bucket

600 kg

pallet 24 buckets

Silicate and silicone plaster



AT
370÷377

AT 370 Silicate-silicone dashed plaster spray 1 mm

Coverage

approx. 1.7 kg/m²

Applications

For decorative thin-layer plastering inside and outside buildings (eg. for ALPOL EKO PLUS thermal insulation systems using Styrofoam or ALPOL EKO PLUS WM using mineral wool). The application features optimized specifically for the application of mechanical using spray guns or appropriate plastering machines. On smaller surfaces plaster can be applied manually. White or body-tinted version according to ALPOL COLOR chart.



Coverage

AT 371 Silicate-silicone dashed plaster 1.5 mm

approx. 2.5 kg/m²

AT 372 Silicate-silicone dashed plaster 2 mm

approx. 3.2 kg/m²

AT 377 Silicate-silicone pitted plaster 2 mm

approx. 2.5 kg/m²

Applications

For decorative thin-layer plastering inside and outside buildings (eg. for ALPOL EKO PLUS thermal insulation systems using Styrofoam or ALPOL EKO PLUS WM using mineral wool). For hand application. Dashed plasters can be applied by means of mechanical spraying. White or body-tinted version according to ALPOL COLOR chart.

25 kg

bucket

600 kg

pallet 24 buckets

Nano-silicone plaster SWING



AT
380÷387 Swing

AT 380 Nano-silicone dashed plaster spray 1 mm

Coverage

approx. 1.7 kg/m²

Applications

For making decorative thin-coat internal and external plaster coatings (e.g. for ALPOL EKO PLUS STANDARD and ALPOL EKO PLUS PREMIUM thermal insulation systems) that are highly resistant to dirt and biocorrosion. The watertight internal microstructure of the plaster ensures effective and even self-cleaning capacity if subject to rainfall, while simultaneously limiting damp patches. NanoBioResistant passive-aggressive formula combines antibacterial and antifungal properties of active molecules (passive protection) and latest-generation capsular shell biocides (active protection), providing a complete and long-lasting protection against biocorrosion. It has been optimized in terms of their application performance for mechanical application with the use of spraying guns or suitable plaster units. On smaller surfaces, plaster can be applied manually. White or body-tinted version according to ALPOL COLOR chart.



AT 381 Nano-silicone dashed plaster 1.5 mm

Coverage

approx. 2.5 kg/m²

AT 382 Nano-silicone dashed plaster 2 mm

approx. 3.2 kg/m²

AT 387 Nano-silicone pitted plaster 2 mm

approx. 2.5 kg/m²

Applications

For making decorative thin-coat internal and external plaster coatings (e.g. for ALPOL EKO PLUS STANDARD and ALPOL EKO PLUS PREMIUM thermal insulation systems) that are highly resistant to dirt and biocorrosion. The watertight internal microstructure of the plaster ensures effective and even self-cleaning capacity if subject to rainfall, while simultaneously limiting damp patches. NanoBioResistant passive-aggressive formula combines antibacterial and antifungal properties of active molecules (passive protection) and latest-generation capsular shell biocides (active protection), providing a complete and long-lasting protection against biocorrosion. Plasters are intended for manual application. Dashed plasters can be applied by means of mechanical spraying. White or body-tinted version according to ALPOL COLOR chart.

MOSAIC, SANDSTONE AND GRANIT STONE DECORATIVE PLASTERS

AT
390-391



Natural mosaic plaster

Applications

For decorative thin-coat internal and external plaster coating. Especially recommended for decorating walls in heavy foot traffic areas such as: staircases, hallways and corridors, building façades, as well as upstands, attached piers and cornices. Available colours according to ALPOL MOSAIC range (RODOS and FLORES chart).



25 kg
bucket

600 kg
pallet 24 bucket

Coverage

AT 390 Natural mosaic plaster 1.2 mm

approx. 3.5 kg/m²

AT 391 Natural mosaic plaster 2.5 mm

approx. 5.5 kg/m²

AT
396



Coloured mosaic internal plaster 1.2 mm

Applications

For decorative thin-coat plaster coating inside buildings. Especially recommended for decorating walls in heavy foot traffic areas such as: staircases, hallways and corridors, as well as on building façades, plinths, attached piers and cornices. Available colours according to ALPOL MOSAIC range (HUMA chart).



25 kg
bucket

600 kg
pallet 24 bucket

Coverage

Approximately 3.5 kg/m².

AT
397



Coloured mosaic plaster 2.5 mm

Applications

For decorative thin-coat internal and external plaster coating. Especially recommended for decorating walls in heavy foot traffic areas such as: staircases, hallways and corridors, building façades, as well as upstands, attached piers and cornices. Available colours according to ALPOL MOSAIC range (BIOKO chart).



25 kg
bucket

600 kg
pallet 24 buckets

Coverage

Approximately 5.5 kg/m².

AT
397 Express



EXPRESS coloured mosaic plaster 1.6 mm

Applications

For decorative thin-coat internal and external plaster coating. Especially recommended for decorating walls in heavy foot traffic areas such as: staircases, hallways and corridors, building façades, as well as upstands, attached piers and cornices. Available colours according to ALPOL EXPRESS chart. Delivered ready-to-use or in components: base + aggregate – for mixing at the warehouse or on construction site.



25 kg
set

7,5 kg + 17,5 kg
bucket + bag

Coverage

Approximately 4.0 kg/m².

MOSAIC, SANDSTONE AND GRANIT STONE DECORATIVE PLASTERS

25 kg

bucket

600 kg

pallet 24 buckets

Decorative plaster CREATIVO - sandstone, granit stone



AT

398 Creativo

Applications

For making decorative coatings imitating texture of natural stone. The product contains a mixture of fine natural and coloured aggregates, mica and acrylic binder. Available in 10 styles to imitate the structure and colours of sandstone (SABBIA range) and 14 colours to imitate granite stone (GRANITO range). Depending on the style and application method, smooth (polished) or coarse (brushed or sanded) surface can be achieved. Fine natural or black mica flakes contained in selected styles add delicate light reflexes to the surface. ALPOL's rustication strips or stick-on stencils imitating bricks, stones, blocks or stone slabs can be used to create original surface finish. Special protective formula provides complete and long-lasting resistance of the surface to biological corrosion. Intended for interior and exterior use. Delivered ready-to-use.

Coverage

Approximately 2 kg/m² per 1 mm of plaster layer



FLOORS

25 kg

bag

1200 kg

pallet 48 bags

Underlay floor from 20 to 100 mm class CT-C20-F4

Applications

For making floor finish, pressure layers, profiling slopes and as an underlay for self-levelling floors. Thickness range: between 20 and 100 mm. Can be used on a capping layer (min. 30 mm thick), as cement solid (min. 20 mm thick) or floating screed, e.g. on a thermal insulation course (min. 40 mm thick). In underfloor heating systems, the minimum layer thickness above a heating component is also 30 mm. It can be applied with a floor screed machine. Intended for interior and exterior use.

Coverage

Approximately 1.9 kg/m²/mm.

AP

400



25 kg

bag

1200 kg

pallet 48 bags

Quick-setting flow-applied floor from 5 to 35 mm class CT-C30-F7

Applications

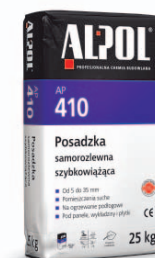
For quick setting flow applied flooring from 5 to 35 mm thick, inside buildings. Can be used with electric underfloor heating systems. If this is the case, the minimum layer thickness should be 25 mm. Provides an excellent underlay for thin-layer, self-levelling cement floors and any types of ceramic, stone and timber cladding. Can also be used in rooms exposed to periodical moisture (bathrooms, kitchens, cellars, garages).

Coverage

Approximately 1.7 kg/m²/mm.

AP

410



25 kg

bag

1200 kg

pallet 48 bags

Self-levelling thin-layer floor from 2 to 20 mm class CT-C20-F7

Applications

For making self-levelling, thin-layer levelling screeds on concrete and cement surfaces, before fixing any floor covering such as: PVC tiles and floorings, panels, carpets and cork floorings, ceramic tiles, etc. Intended for interior use.

Coverage

Approximately 1.4 kg/m²/mm.

AP

420



FLOORS

AP
421



Quick setting self-levelling thin-layer floor between 1 and 10 mm class CT-C35-F7

Applications

For making quick setting, self-levelling, thin-layer levelling screeds on concrete and cement surfaces, before fixing any floor covering such as: PVC tiles and floorings, panels, carpets and cork floorings, mosaic floorings, parquet floorings, ceramic tiles, etc. Intended for interior use.

Coverage

Approximately 1.4 kg/m²/mm.

25 kg
bag

1200 kg
pallet 48 bags

AP
450



Anhydrite flow-applied floor from 25 to 60 mm class CA-C30-F6

Applications

For machine or manual application of flow applied flooring from 25 to 60 mm thick. Depending on the application, the minimum thickness of ALPOL AP 450 anhydrite floor should be: solid underlay – 25 mm; underlay on a separating layer – 30 mm, flowing underlay – 35 mm, underlay in underfloor heating system – 25 mm above the heater, respectively. Provides an excellent underlay for thin-layer, self-levelling gypsum floors and any types of ceramic and stone cladding. Intended for interior use.

Coverage

Approximately 1.9 kg/m²/mm.

30 kg
bag

1050 kg
pallet 35 bags

AP
460



Self-levelling thin-layer gypsum floor between 2 and 10 mm class CA-C20-F6

Applications

For making quick-setting, self-levelling, thin-layer levelling screeds on anhydrite, concrete and cement surfaces. Providing a perfectly smooth surface upon application, it is especially recommended especially for all kinds of floor covers such as: carpets, PVC, cork floorings as well as ceramic and mosaic tiles, and as a top course in electric floor heating systems. Intended for interior use.

Coverage

Approximately 1.4 kg/m²/mm.

25 kg
bag

1200 kg
pallet 48 bags

CLADDING ADHESIVES

25 kg
bag

1200 kg
pallet 48 bags

Interior tile adhesive class C1T

Applications

For fixing terracotta and ceramic tiles inside buildings, except for critical surfaces. Do not use for smoothing surfaces and in case of floor heating systems.

Coverage

From 1.7 up to 3.1 kg of dry matter to fix 1 m² of tiles (depending on the float used.)

AK
509



25 kg
bag

1200 kg
pallet 48 bags

Frost resistant tile adhesive class C1T

Applications

For fixing terracotta and ceramic tiles inside and outside buildings, except for critical surfaces. Do not use for smoothing surfaces and in case of floor heating systems.

Coverage

From 1.8 up to 3.2 kg of dry matter to fix 1 m² of tiles (depending on the float used.)

AK
510



25 kg
bag

1200 kg
pallet 48 bags

Flexible adhesive for porcelain tiles class C1TE

Applications

For fixing various types of porcelain, large-size glazed, terracotta and stone tiles (except for marble). Suitable for use on floor heating. Intended for interior and exterior use.

Coverage

From 1.8 up to 3.2 kg of dry matter to fix 1 m² of tiles (depending on the float used.)

AK
511



25 kg
bag

1200 kg
pallet 48 bags

Quick-setting adhesive for porcelain tiles class C2FST1

Applications

For fixing various porcelain tiles and large-size glazed, terracotta and stone tiles (except for marble), and other low-absorbing tiles on critical surfaces (exposed to deformation, heated, on terraces and balconies, etc.). Recommended when high speed of work is required. Recommended as a component of ALPOL HYDRO PLUS, ALPOL HYDRO PLUS T and ALPOL AQUA PLUS waterproofing system. Intended for interior and exterior use.

Coverage

From 1.6 up to 3.0 kg of dry matter to fix 1 m² of tiles (depending on the float used.)

AK
512



CLADDING ADHESIVES

AK
513



Flexible tile adhesive class C2TES1

Applications

For fixing glazed, terracotta and stone tiles (except for marble) on critical surfaces (exposed to deformation, heated, on terraces and balconies etc.), excluding porcelain, clinker and other low-absorbing tiles. Intended for interior and exterior use.

Coverage

From 1.5 up to 2.9 kg of dry matter to fix 1 m² of tiles (depending on the float used.)

25 kg

bag

1200 kg
pallet 48 bags

5 kg

small bag

20 kg

package 4 bags

AK
514



White flexible marble adhesive class C2TES1

Applications

For fixing marble, granite and sandstone tiles, glass blocks and other stone tiles, as well as any ceramic as well as porcelain tiles and glass blocks on critical surfaces (exposed to deformation, heated, on terraces and balconies etc.). Intended for interior and exterior use.

Coverage

From 1.4 up to 2.9 kg of dry matter to fix 1 m² of tiles (depending on the float used.)

25 kg

bag

1200 kg
pallet 48 bags

AK
515



Flexible adhesive for porcelain tiles class C2TS1

Applications

For fixing various porcelain tiles and large-size glazed, terracotta and stone tiles (except for marble), and other low-absorbing tiles on critical surfaces (exposed to deformation, heated, on terraces and balconies, etc.). Intended for interior and exterior use.

Coverage

From 1.6 up to 3.0 kg of dry matter to fix 1 m² of tiles (depending on the float used.)

25 kg

bag

1200 kg
pallet 48 bags

AK
516



Liquefied quick-setting tile adhesive applied in thin layer class C2FES1

Applications

For fixing various porcelain floor tiles and large-size glazed, terracotta and stone tiles (except for marble), and other low-absorbing tiles on critical surfaces (exposed to deformation, heated, on terraces and balconies, etc.). Semi-liquid consistency of the adhesive eliminates air gaps under tiles, which prevents water penetration. Recommended as a component of ALPOL HYDRO PLUS and ALPOL HYDRO PLUS T waterproofing systems. For interior and exterior use.

Coverage

From 1.3 up to 4.0 kg of dry matter to fix 1 m² of tiles (depending on the float used.)

25 kg

bag

1200 kg
pallet 48 bags

CLADDING ADHESIVES

25 kg bag
1200 kg pallet 48 bags

Liquefied quick-setting tile adhesive applied in medium thick layer class C2FES1

Applications

For fixing various porcelain floor tiles and large-size glazed, terracotta and stone tiles (except for marble), and other low-absorbing tiles on critical surfaces (exposed to deformation, heated, on terraces and balconies, etc.). It allows simultaneous surface levelling with a coat thickness between 4 and 20 mm and fixing tiles. Especially recommended for fixing tiles in swimming pools with medium-thick adhesive layer method. Semi-liquid consistency of the adhesive eliminates air gaps under tiles, which prevents water penetration. Recommended as a component of ALPOL HYDRO PLUS, ALPOL HYDRO PLUS T and ALPOL AQUA PLUS waterproofing system. Intended for interior and exterior use.

Coverage

From 2.4 up to 3.5 kg of dry matter to fix 1 m² of tiles (depending on the float used.)

AK
517



25 kg bag
1200 kg pallet 48 bags

Clinker nano-adhesive class C2TS1

Applications

For fixing façade fittings and clinker tiles and any other ceramic cladding, natural and artificial stone tiles (except for marble), to any vertical and horizontal substrates, including the critical (deforming, heated, terraces, balconies etc.) applications. With its unique composition and utilisation of nano-additives, the product is highly resistant to salt efflorescence. The nano-adhesive is a component of the clinker bonding system containing nano-mortars and nano-grouts. Intended for interior and exterior use.

Coverage

From 1.4 up to 3.1 kg of dry matter to fix 1 m² of tiles (depending on the float used.)

AK
518



NanoTechnology

salt efflorescence build-up prevention



TOP BUILDER 2009 AWARD



QI 2012 GOLD MEDAL

ADHESIVES FOR THERMAL INSULATION SYSTEMS

AK
525



STANDARD EPS board adhesive

Application

For bonding EPS boards in ALPOL EKO PLUS jointless thermal insulation system. Fiber reinforced. Intended for interior and exterior use.

Coverage

From 3 to 4 kg/m².

25 kg

bag

1200 kg

pallet 48 bags

AK
527



STANDARD adhesive for EPS board-based insulation

Application

For bonding EPS insulation boards and embedding reinforcing mesh in ALPOL EKO PLUS thermal jointless insulation system. Fiber reinforced. Intended for interior and exterior use.

Coverage

while bonding boards – from 3 to 4 kg/m².
while embedding mesh – from 3.5 to 4.5 kg/m².

25 kg

bag

1200 kg

pallet 48 bags

AK
530



EPS board adhesive

Application

For bonding EPS boards (including boards made of graphite) within the ALPOL EKO PLUS jointless thermal insulation system. Adhesive with improved adhesion to the substrate. Fiber reinforced. Intended for interior and exterior use.

Coverage

From 3 to 4 kg/m².

25 kg

bag

1200 kg

pallet 48 bags

AK
531



White thermal insulation adhesive

Application

For bonding EPS and mineral wool insulation boards and embedding reinforcing mesh in ALPOL EKO PLUS and ALPOL EKO PLUS WM thermal jointless insulation systems. Naturally white adhesive with improved adhesion to the substrate. Fiber reinforced. Recommended for use under light decorative plaster. Intended for interior and exterior use.

Coverage

while bonding boards – from 3 to 5.5 kg/m².
while embedding mesh – from 3.5 to 6 kg/m².

25 kg

bag

1200 kg

pallet 48 bags

ADHESIVES FOR THERMAL INSULATION SYSTEMS

25 kg

bag

1200 kg

pallet 48 bags

Adhesive for EPS board-based insulation

Application

For bonding EPS insulation boards (including boards made of graphite), XPS insulation boards and embedding reinforcing mesh in ALPOL EKO PLUS thermal jointless insulation system. Adhesive with improved adhesion to the substrate. Fiber reinforced. Intended for interior and exterior use.

Coverage

while bonding boards – from 3 to 4 kg/m².

while embedding mesh – from 3.5 to 4.5 kg/m².

AK
532



25 kg

bag

1200 kg

pallet 48 bags

Adhesive for mineral wool-based insulation

Application

For bonding mineral wool insulation boards and embedding reinforcing mesh in ALPOL EKO PLUS WM jointless thermal insulation system. Adhesive with improved adhesion to the substrate. Fiber reinforced. Intended for interior and exterior use.

Coverage

while bonding boards – from 4.5 to 5.5 kg/m².

while embedding mesh – from 5 to 6 kg/m².

AK
533



25 kg

bag

1200 kg

pallet 48 bags

WINTER Adhesive for thermal insulations

Application

For bonding expanded (EPS), extruded (XPS) polystyrene and mineral wool insulating boards as well as embedding reinforcing mesh in ALPOL EKO PLUS, ALPOL EKO PLUS WM and ALPOL STROP WM jointless thermal insulation systems. Especially recommended for works carried out in mild winter conditions, in air temperature close to 0°C (temperature drop down to -5°C after 8 hours from application is allowed). Adhesive with improved adhesion to the substrate. Fiber reinforced. Intended for interior and exterior use.

Coverage

while bonding boards – from 3.5 to 5.5 kg/m².

while embedding mesh – from 4 to 6 kg/m².

AK
534



PAINTS

AF
605

Indoor white acrylic Paint

Applications

Water-soluble acrylic paint intended for white paint coatings on any sound mineral and organic substrates not exposed to moisture. Particularly recommended as an ideal underlay paint for the first coat, to be then covered with topcoat paints. It is perfect for evening out and minimizing substrate absorbability. With a high content of fillers and pigments, it provides good covering power. By improving adhesion of topcoat paints, it reduces their consumption. For application in housing, public utility and industrial interiors.

Coverage

From approx. 0.08 to approx. 0.12 l/m² (for single-coat application).



10 l
bucket
330 l
pallet 33 buckets
5 l
bucket
270 l
pallet 54 buckets

AF
610

Interior acrylic and latex paint

Applications

Water-soluble paint for decorative and protective paint coatings on any sound, not exposed to moisture, mineral and organic substrates. Both for fresh and renovated surfaces. Forms a durable, flexible and mat film of high resistance to washing and abrasion. Available in colours from ALPOL COLOR chart and selected colours from other charts.

Coverage

Approximately 0.17 l/m² (for double-coat application).



10 l
bucket
330 l
pallet 33 buckets
5 l
bucket
270 l
pallet 54 buckets

AF
615

Interior latex and silicone paint

Applications

Water-soluble interior paint for decorative and protective façade paint coatings on any sound mineral and organic substrates, both on new and renovated surfaces. Forms a durable, flexible and mat film of ultimate resistance to abrasion and wet brushing. It is especially recommended for surfaces subject to strict hygienic and sanitary requirements or to heavy use, e.g. in nursery schools, schools, health care facilities, offices, hotels, restaurants, corridors, staircases, bathrooms, kitchens, as well as whenever coatings need to show high durability and washability. Available in white, and in colours from ALPOL COLOR chart as well as selected colours from other charts.

Coverage

Approximately 0.12 l/m² (for single-coat application).



10 l
bucket
330 l
pallet 33 buckets
5 l
bucket
270 l
pallet 54 buckets

AF
640

**Acrylic façade paint
type G₃-E₃-S₁-V₃-W₁-A₀-C₁**

Applications

For decorative and protective façade paint coatings on any sound mineral and organic substrates, both on new and renovated surfaces. Recommended as a finish coat on mineral plaster in ALPOL EKO PLUS system using Styro-foam. Forms a durable and flexible mat surface of great resistance to weather conditions (precipitation, sunlight, extreme temperatures and weathering) as well as to abrasion and washing. Available colours according to ALPOL COLOR range.

Coverage

Approximately 0.25 l/m² (when applying two coats of paint on medium-coarse plaster)



10 l
bucket
330 l
pallet 33 buckets
5 l
bucket
270 l
pallet 54 buckets

15 l
bucket
360 l
pallet 24 buckets

Textured spray paint

Applications

For making decorative textured paint coating inside buildings. A layer of finishing the ceiling in ALPOL STROP WM insulation system. Available in white. Other colours on request according to ALPOL COLOR chart.

Coverage

From approx. 0.6 to approx. 1.2 l/m² (depends on the application method and type of the painted surface).



AF
641



10 l
bucket
330 l
pallet 33 buckets

Highly flexible acrylic paint

type: G₃-E₃-S₁-V₃-W₃-A₃-C₁

Applications

For permanently flexible decorative and protective external and internal paint coatings on any sound mineral and organic substrates. Forms a flexible mat film of high resistance to water penetration, dirt and biocorrosion. Recommended for surfaces with stable capillary and shrinkage cracks of 1.2 mm in width (in case of two coats of paint.) Suitable for thermal insulation system façade renovations. Unsuitable for coating unstable structural cracks. Available in white and colour versions according to ALPOL COLOR chart.

Coverage

From approx. 0.2 to approx. 0.6 l/m² (in case of two coats of paint), depending on the amount and width of cracks as well as on the type and quality of the surface.



AF
645



10 l
bucket
330 l
pallet 33 buckets

Silicate façade paint

type G₃-E₃-S₁-V₁-W₁-A₀-C₀

Applications

For decorative and protective façade paint coatings on any sound mineral and organic substrates, both on new and renovated surfaces. Recommended for painting historical and ancient buildings and as a coat on mineral plaster in ALPOL EKO PLUS thermal insulation systems using Styrofoam and ALPOL EKO PLUS WM using mineral wool. Product of great covering power, contains conditioners protecting from excessive water absorption. Forms a durable and mat surface of great resistance to dirt and weather conditions (precipitation, sunlight, extreme temperatures and weathering). It stands out for its high permeability to air, steam and CO₂, as well as for its extraordinary resistance to microorganisms (fungi, algae, mould). The porosity and substrate structure remain unchanged after paint use. This allows to preserve the natural look of the façade surface. Available colours according to ALPOL COLOR range.

Coverage

Approximately 0.33 l/m² (when applying two coats of paint on medium-coarse plaster.)



AF
660



PAINTS

AF
680 Salsa



Nano-silicone facade paint SALSA

type G₃-E₃-S₁-V₂-W₃-A₀-C₀

Applications

For decorative and protective façade paint coatings on any sound mineral and organic substrates, both on new and renovated surfaces. Recommended for renovation of ancient buildings and as a finish coat for ALPOL EKO PLUS EPS-based insulation systems and ALPOL EKO PLUS WM mineral wool-based insulation systems. It forms a durable vapour-permeable and aesthetic matt coating with high resistance to dirt and adverse weather conditions (precipitation, sunlight, temperature variations and weathering). Watertight internal microstructure of the paint ensures effective and uniform self-cleaning capacity of its surface during rainfalls, while simultaneously limiting formation of damp patches. NanoBioResistant passive-active formula combines antibacterial and anti-fungal properties of nano-molecules (passive protection) and latest-generation capsular shell biocides (active protection), providing complete and long-lasting protection against biocorrosion. Available colours according to ALPOL COLOR chart.

Coverage

Approximately 0.33 l/m² (when applying two coats of paint on medium-coarse plaster).



10 l
bucket
330 l
pallet 33 buckets
5 l
bucket
270 l
pallet 54 buckets

AF
685



Silicone flexible paint

type G₃-E₃-S₁-V₂-W₃-A₁-C₀

Applications

For decorative and protective external and internal paint coatings with increased flexibility on any sound mineral and organic substrates. Forms a flexible, vapour-permeable mat film of high resistance to water penetration, dirt and biocorrosion. Recommended for surfaces with stable capillary and shrinkage cracks of 0.25 mm in width (in case of two coats of paint.) Suitable for thermal insulation system facade renovations. Unsuitable for coating unstable structural cracks. Available in white and colour versions according to ALPOL COLOR chart.

Coverage

From approx. 0.2 to approx. 0.6 l/m² (in case of two coats of paint), depending on the amount and width of cracks as well as on the type and quality of the surface.



10 l
bucket
330 l
pallet 33 bucket
5 l
bucket
270 l
pallet 54 buckets

PRIMERS

AG
700



Deep penetrating primer

Applications

For strengthening and optimisation of substrate absorption. Intended for interior and exterior use.

Coverage

Approximately 0.15 kg/m².

10 kg
container
600 kg
pallet 60 containers
5 kg
container
450 kg
pallet 90 containers
2 kg
container
330 kg
pallet 165 containers

13 kg

bucket

429 kg

pallet 33 buckets

Primer for mineral and silicone plasters

Applications

For creating a rough white or coloured undercoat for mineral and silicone plaster, to enhance adhesion on mineral substrates as well as for reducing and optimising substrate absorption. Intended for interior and exterior use (e.g. in EPS-based ALPOL EKO PLUS and mineral wool-based ALPOL EKO PLUS WM and ALPOL STROP WM thermal insulation systems). Also suitable for priming acrylic plaster substrates and for optimising absorption and colour of difficult surfaces to be painted with silicone paint. Recommended as an undercoat prior to painting textured ALPOL AT 319 mineral plaster with ALPOL AI 785 colourant.

Coverage

Approximately 0.3 kg/m² (for manual application).

Approximately 0.6 kg/m² (for mechanical application on mineral wool).

AG

701



20 kg

bucket

480 kg

pallet 24 buckets

Plaster primer for concrete substrates

Applications

For creating a rough, adhesive underlay for plaster on concrete as well as ceramic substrates and for reducing and optimizing substrate absorption. To be used under gypsum plasters inside buildings and under mineral plasters inside and outside buildings.

Coverage

Approximately 0.3 kg/m².

5 kg

bucket

450 kg

pallet 90 buckets

AG

702



10 kg

container

600 kg

pallet 60 containers

Stained isolating primer for the floors

Applications

For reduction and optimisation of substrate absorption. Recommended for ALPOL self-levelling and flow-applied floors.

Coverage

Approximately 0.2 kg/m².

5 kg

container

450 kg

pallet 90 containers

2 kg

container

330 kg

pallet 165 containers

AG

703



5 kg

bucket

450 kg

pallet 90 buckets

Colourless primer for finishing coats

Applications

For strengthening and optimisation of substrate absorption. Recommended for priming ALPOL gypsum and polymer finish coats. Also for priming absorbent plaster surfaces under emulsion paint stained in dark or saturated colors (paints made on transparent bases), and in the case on non-uniform coating for color or chemically substrates. Intended for interior and exterior use.

Coverage

Approximately 0.15 kg/m².

2 kg

container

330 kg

pallet 165 containers

AG

704



PRIMERS

AG
705



Primer for acrylic plasters

Applications

For creating a rough, adhesive, white or coloured underlay on any building substrates for priming acrylic and mosaic plaster as well as for reducing and optimizing substrate absorption. For internal and external use (e.g. in ALPOL EKO PLUS thermal insulation system.) The primer can also be used to prime mineral plasters.

Coverage

Approximately 0.25 kg/m².

13 kg

bucket

429 kg

pallet 33 buckets

5 kg

bucket

450 kg

pallet 90 buckets

AG
706



Primer for silicate plasters

Applications

For creating a rough, adhesive, white or coloured course on any building substrates for silicate and silicate-silicone plaster and for reducing and optimisation of substrate absorption. Intended for interior and exterior use (e.g. for ALPOL EKO PLUS thermal insulation systems using Styrofoam or ALPOL EKO PLUS WM using mineral wool.)

Coverage

Approximately 0.25 kg/m².

13 kg

bucket

429 kg

pallet 33 buckets

AG
707



Primer for waterproofing systems

Applications

For strengthening and optimisation of mineral substrate absorption. Recommended for priming substrates to be covered with silicate plasters, silicate and mineral paints as well as any type of waterproofing compounds. Does not create film coating after drying. Component of ALPOL HYDRO PLUS, ALPOL HYDRO PLUS T and ALPOL AQUA PLUS waterproofing systems. Intended for interior and exterior use.

Coverage

Approximately 0.25 kg/m².

10 kg

container

600 kg

pallet 60 containers

2 kg

container

330 kg

pallet 165 containers

AG
708



Plaster primer - concentrated

Applications

For reduction and optimisation of substrate absorption. Recommended for priming gypsum plasters e.g.: ALPOL AG T29, AG T30 and AG T31. The primer can also be used to prime cement-lime plasters. Available as a concentrated product to be diluted with water. Enhances substrate adhesion and makes it dry out evenly. Intended for interior and exterior use.

Preparation coverage once diluted with water

Silicate blocks, cellular concrete – 1:2, approximately 0.12 kg/m²

Hollow clay tiles – 1:5, approximately 0.06 kg/m²

15 kg

bucket

360 kg

pallet 24 buckets

WATERPROOFING SYSTEMS

20 kg

bucket

660 kg

pallet 33 buckets

5 kg

bucket

300 kg

pallet 60 buckets

Bitumen waterproofing and priming emulsion

Applications

For priming of concrete substrates, brickwork, flat roofs, terraces, roof slopes etc., as a underlayment for waterproofing courses made of ALPOL AH 741 bitumen compound, torch-on membrane and other coating materials, and for performing lightweight waterproofing. Component of ALPOL AQUA PLUS waterproofing system. Intended for interior (basements, garages) and exterior use.

primer solution for bitumen compounds, diluted 1:9

primer solution for torch-on membranes, diluted 1:4

solution for lightweight waterproofing system, diluted 1:1

Coverage (for a single coat)

from 0.2 to 0.3 kg/m²

from 0.22 to 0.32 kg/m²

from 0.25 to 0.35 kg/m²

AH
740



20 kg

bucket

660 kg

pallet 33 buckets

Bitumen waterproofing compound

Applications

For permanently flexible waterproofing of building underground parts (foundations, walls, basement, ceilings and floors on the ground in basements, garages), underfloor waterproofing of terraces, balconies and irregular surfaces. Allows expanded polystyrene (EPS) and extruded polystyrene (XPS) boards to be bonded to building substrates. Component of ALPOL AQUA PLUS waterproofing system. Intended for interior and exterior use.

Waterproofing systems (for 1 coat)

bonding (by "cakes")

Coverage

approx. 1÷1,5 kg/m²

approx. 1÷2 kg/m²

AH
741



12 kg

bucket

660 kg

pallet 55 buckets

4 kg

bucket

576 kg

pallet 144 buckets

Waterproofing membrane

Applications

For waterproofing of typical building surface exposed to moisture and water (walls, floors). After drying, the product forms a highly flexible, waterproof, resistant to frost coating with good adhesion to the substrate. The product is recommended for any type of ceramic cladding attached adhesives. Do not use on balconies and terraces. Component of waterproofing system ALPOL HYDRO PLUS.

Coverage

Approximately 2.4 kg/m² (with 2-3 applications).

AH
751



WATERPROOFING SYSTEMS

AH
752



Waterproof mortar for terraces and balconies

Variety CM, class O1P

Applications

For sealing and waterproofing of building surfaces exposed to moisture and water (balconies, terraces, stairs, plinths, walls, floors, etc.). After drying, mortar creates a very flexible, tight, resistant to frost coating with good adhesion to the substrate. Especially recommended for areas exposed to changing weather conditions and aggressive environment (road salts, sulphates, chlorides, acids, oil.) The product is recommended for any type of ceramic cladding (balconies, terraces.) Component of ALPOL HYDRO PLUS T waterproofing system. Intended for interior and exterior use.

lightweight insulation (damp proofing course): coat thickness after drying min. 2.0 mm

medium insulation (water proofing course): coat thickness after drying min. 2.5 mm

heavy insulation (water proofing course): coat thickness after drying min. 3.0 mm

Coverage

approx. 2.0 kg/m²

approx. 2.5 kg/m²

approx. 3.0 kg/m²

20 kg

bucket

660 kg

pallet 33 buckets

10 kg

bucket

550 kg

pallet 55 buckets

AH
753



Waterproof mortar for swimming pools

Variety CM, class O2P

Applications

For sealing and waterproofing of building surfaces exposed to moisture, water exerting and not exerting the hydrostatic pressure (swimming pools, tap water reservoirs, ponds, fountains, balconies, terraces, stairs, plinths, walls, floors, etc.). Especially recommended for heavily loaded ground and under high hydrostatic pressure non-aggressive liquids for areas exposed to changing weather conditions, seawater and aggressive substances (road salts, sulphates, chlorides, acids, oil.) Can be applied on highly irregular surfaces. Due to rough dry surface provided, the product is recommended for any types of ceramic cladding (swimming pools, balconies, terraces.) Component of ALPOL AQUA PLUS waterproofing system.

lightweight insulation (damp proofing course): coat thickness after drying min. 2.0 mm

heavy insulation (water proofing course): coat thickness after drying min. 3.0 mm

Coverage

approx. 3 kg/m²

approx. 4.5 kg/m²

19 kg

bucket

627 kg

pallet 33 buckets

WATERPROOFING SYSTEMS

19 kg

bucket

627 kg

pallet 33 buckets

Waterproof mortar for water and sewage tanks

Applications

For waterproofing and protection of steel structures and concrete surfaces against carbonation and strong chemical aggression (Class Exposure: XA3). For sealing and making flexible insulation of tanks for industrial and utility water, swimming pools, pools with medicinal waters, ponds and other water bodies (providing protection against UV radiation), infrastructure sewage treatment plant (sewers, tanks for sewage, biological reactors), biogas (fermentation and post-fermentation tanks, storage tanks for methane, silos for silage), agricultural installations (liquid manure tanks, septic tanks), hydraulic facilities (reservoirs, abutments, embankments), balconies, terraces, basement walls and ceilings, basements, garages, subways, tunnels. Especially recommended for areas exposed to changing weather conditions, seawater and aggressive substances (sulphates, chlorides, acids). It is also suitable for surfaces of complex shapes. It can be used as insulation and final surface treatment in places not exposed to mechanical damage and as insulation under ceramic tiles (of any kind) attached using an adhesive. It can also be used as a vapor barrier under next layers. Component of ALPOL AQUA PLUS waterproofing system.

damp proofing course (coat thickness after drying min. 2.0 mm)

water reservoirs (coat thickness after drying min. 2.5 mm)

corrosion protection of concrete (coat thickness after drying min. 3.0 mm)

XA3 environment: coat thickness after drying min. 3.0 mm

Coverage

approx. 3 kg/m²

approx. 3.8 kg/m²

approx. 4.5 kg/m²

approx. 4.5 kg/m²

AH
754



5 kg

bucket

300 kg

pallet 60 buckets

Grey epoxy pointing grout

type RG

Applications

For grouting chemical resistant and waterproof joints from 1 to 10 mm wide in food processing facilities, kitchens, dairies, breweries, chemical works, light industry plants, laboratories, swimming pools with normal, heated or sea water, and on balconies, terraces, in warehouses and production halls. Component of ALPOL AQUA PLUS waterproofing system. Intended for interior and exterior use.

Coverage

From 0.3 to 2.6 kg/m² (depending on the tile size, joint width and application).

AH
760



600 ml

package

Polyurethane compound for expansion joints

from 4 to 20 mm

Applications

For filling and waterproofing of expansion and structural joints, scratches and cracks from 4 up to 20 mm in width in building facilities. Recommended for use on terraces and balconies, swimming pools, bathrooms and kitchens, thermally insulated walls, car park pavements, garage floors, industrial floors and roofs, between ceramic cladding as well as between concrete, steel, timber and PVC components. For bonding of lightweight metal and steel structures. Suitable also for waterproofing, joining and bolting in residential, industrial, road and hydro-engineering construction applications. Being tested for covering power, the hardened surface can be coated with paint and varnish. Intended for interior and exterior use.

Yield

From 2.9 to 25 m from one cartridge (600 ml) depending on the width and depth of joints.

AH
765



IMPREGNATING AND CLEANING AGENTS

AI
770

Brick and tile cleaner

Applications

For removing salt mist from clinker brick and tiles, porcelain, glazed and terracotta tiles as well as from cobblestone. It is also suitable for cleaning off cement and lime mortar remnant, rust, oil spots, grease and nicotine. Can also be used on glass and some metals (e.g. stainless steel, aluminium, copper) without damaging them. Also suitable for cleaning tools. Does not change colour of the cleaned items. Intended for interior and exterior use.

Coverage

From 0.02 to 0.35 kg/m² (depending on the amount of dirt and type of substrate).

5 kg

container

450 kg

pallet 90 containers

1 kg

bottle

10 kg

package 10 bottles



AI
780

Nano-impregnating agent for mineral surfaces

Applications

For impregnating clinker brick and tile, natural and artificial stone surfaces. Also suitable for hydrophobisation of concrete, cobblestone, cement and clay roof tiles and joints between bricks and tiles. When dried, it forms a protective film to prevent ingress of water and aggressive substances. Does not change colour of the impregnated item. Also suitable for alkaline mineral substrates. If impregnated before pointing, cleaning off stains from the surface is facilitated. Intended for interior and exterior use.

Coverage

Between 0.03 and 0.25 kg/m² (depending on the type of substrate).



5 kg

container

450 kg

pallet 90 containers

1 kg

bottle

10 kg

package 10 bottles



AI
785

Colouring impregnating agent

Applications

For surface impregnation and staining of ALPOL AT 319 mineral textured plaster, to achieve surface finish imitating the colour of natural wood in ALPOL EKO PLUS ESP-based thermal insulation systems. It can be also used for impregnating other thin-layered mineral and acrylic plasters, and for renovation painting of wooden and wood-based products intended for indoor and outdoor use. It is an odourless product, resistant to light and changing weather conditions. It forms a coloured, transparent coating on the surface while giving it an elegant satin gloss and leaves the surface texture visible.

Coverage

Approximately 0.2 kg/m² (while applying two coats on medium-coarse plaster)

5 kg

bucket

10 kg

bucket

20 kg

bucket



AI
790

Biocidal agent for removing fungi and algae

Applications

For removing fungi and algae from surfaces of materials and construction structures (except for wooden surfaces) and for providing temporal protection for such surfaces against build-up and propagation of microbiological corrosion. Intended for both interior and exterior use.

Coverage

Approximately 0.15 kg/m² (estimated value). Product consumption depends on the application method and type of the surface.

5 kg

container

450 kg

pallet 90 containers

1 kg

bottle

10 kg

package 10 bottles



POLYMER COMPOUNDS

20 kg
bag
960 kg
pallet 48 bags
4 kg
small bag
20 kg
package 5 bags

White polymer finish coat ALPOL Putz S
type 3A

Applications

For applying a thin-layer smooth finish on plaster, gypsum boards, painted surfaces and concrete substrates. For patching small defects and irregularities on plaster and concrete surfaces. Also suitable for pointing gypsum board joints using reinforcing tape. Suitable for use on walls and ceilings inside the buildings, in rooms unexposed to moisture. For hand or machine application. Especially recommended for application with the use of hydrodynamic units.

Coverage

Approximately 1.1 kg/m²/mm.



AM
800



25 kg
bucket
600 kg
pallet 24 buckets
10 kg
bucket
540 kg
pallet 54 buckets

White polymer finish coat ALPOL Putz M START
type 3A

Applications

For applying a thin-layer smooth finish, as well as primers for finishing coats on plaster, plasterboard, coatings and concrete substrates. For filling small voids and irregularities of plaster and concrete surfaces. Also suitable for pointing gypsum boards using reinforcing tape. For use on walls and ceilings inside the buildings, in rooms unexposed to moisture. For hand or machine application. Recommended as a primer for extra white polymer finish coat ALPOL AM 810.

Coverage

Approximately 1.6 kg/m²/mm.



AM
810 START



3 kg
bucket
450 kg
pallet 150 buckets

25 kg
bucket
600 kg
pallet 24 buckets
10 kg
bucket
540 kg
pallet 54 buckets

Extra white polymer finish coat ALPOL Putz M
type 3A

Applications

For applying a thin-layer smooth finish with a high degree of whiteness, on finishing coats, plasters, plasterboards, coatings and concrete substrates. For filling small voids and irregularities of plaster and concrete surfaces. Also suitable for pointing gypsum boards using reinforcing tape. For use on walls and ceilings inside the buildings, in rooms unexposed to moisture. For hand and machine application.

Coverage

Approximately 1.6 kg/m²/mm.



AM
810



3 kg
bucket
450 kg
pallet 150 buckets

TOP BUILDER 2010
AWARD



GYPSON PUTTY, ADHESIVE, PUTTY, GYPSON FINISH

20 kg
bag
960 kg
pallet 48 bags
4 kg
small bag
20 kg
package 5 bags

Gypsum putty
variety A1

Applications

Any kind of building works such as: patching wall and ceiling spots (filling grooves and holes), installation works (fixing junction boxes and electric wiring), plaster works (fixing corner strips and plaster beads) etc. Can also be used for production of gypsum components (prefabricates and stuccowork.) Intended for interior use.

Coverage

Depending on particular use.

AG
B01



LOOSE

GYP SUM PUTTY, ADHESIVE, PUTTY, GYP SUM FINISH

AG
K10



Gypsum adhesive P

Applications

For bonding and patching Pro-Monta type gypsum boards, gypsum blocks, stuccowork and other gypsum components inside buildings.

Coverage

Approximately 1 kg/m²/mm.

20 kg
bag

960 kg
pallet 48 bags

AG
K11



T gypsum adhesive

Applications

For bonding gypsum boards and gypsum board units to thermal and sound insulation to walls inside buildings.

Coverage

Approximately 2.5 kg/m².

20 kg
bag

960 kg
pallet 48 bags

AG
S17



Flexible gypsum putty type 4B

Applications

For hand patching of gypsum board joints without using reinforcing tape. Intended for jointing gypsum boards with semi-rounded, semi-rounded tapered, chamfered square and square edges. Intended for interior use.

Coverage

Approximately 1 kg/m²/mm.

20 kg
bag

960 kg
pallet 48 bags

4 kg
small bag

20 kg
package 5 bags

AG
S20



Slow-setting gypsum putty type 1B, variety B2/20/2

Applications

For pointing gypsum board joints, Pro-Monta boards and other gypsum components, for patching plasterwork, as a substrate for finish coats, and for patching small irregularities on walls and ceilings. Intended for interior use.

Coverage

Approximately 1 kg/m²/mm.

20 kg
bag

960 kg
pallet 48 bags

4 kg
small bag

20 kg
package 5 bags

2 kg
small bag

20 kg
package 10 bags

GYP SUM PUTTY, ADHESIVE, PUTTY, GYP SUM FINISH

20 kg
bag
960 kg
pallet 48 bags
4 kg
small bags
20 kg
packet 5 bags

Gypsum finish coat type B2/20/2

Applications

For making finish on plaster, gypsum boards and concrete substrates. Suitable for use on walls and ceilings inside the buildings, in rooms unexposed to moisture. For hand or machine application. Especially recommended for application with the use of hydrodynamic units.

Coverage

Approximately 1 kg/m²/mm.

AG
S21



20 kg
bag
960 kg
pallet 48 bags
4 kg
small bag
20 kg
package 5 bags

White gypsum finish coat type B2/20/2

Applications

For making white finish on plaster, gypsum boards and concrete substrates. Suitable for use on walls and ceilings inside the buildings, in rooms unexposed to moisture. For hand or machine application. Especially recommended for application with the use of hydrodynamic units.

Coverage

Approximately 1 kg/m²/mm.

AG
S22



20 kg
bag
960 kg
pallet 48 bags
4 kg
small bags
20 kg
package 5 bags

Ultra-white flexible gypsum finish coat type 2B, variety B2/20/2

Applications

For manual smoothing of joints between gypsum boards as well as wall for making ultra-white finish on plaster, gypsum boards and concrete substrates. Suitable for use on walls and ceilings inside the buildings, in rooms unexposed to moisture. For hand or machine application. Especially recommended for application with the use of hydrodynamic units.

Coverage

Approximately 1 kg/m²/mm.

AG
S24



TOP BUILDER 2011
AWARD



GYP SUM PLASTERS

25 kg
bag
1200 kg
pallet 48 bags

Gypsum plaster applied by hand

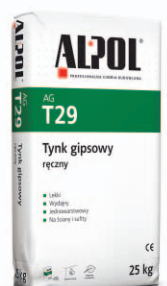
Applications

For manual application of gypsum, single coat plaster on walls and ceilings in rooms not exposed to permanent moisture and condensation of steam. Provides an excellent underlay for ceramic lining, decorative plaster, finish coat, wallpaper and paint. Minimum plaster coating thickness: 8 mm. Intended for interior use.

Coverage

Approximately 0.9 kg/m²/mm.

AG
T29



GYPSUM PLASTERS

AG
T30



STANDARD lightweight gypsum plaster for machine application

Variety B4/50/2

Application

For machine application of gypsum, single coat plaster on walls and ceilings in rooms not exposed to permanent moisture and condensation of steam. Provides an ideal underlay for ceramic lining, decorative plaster, finish coat, wallpaper and paint. Minimum plaster coating thickness: 8 mm. The plaster can also be applied by hand. Intended for interior use.

Coverage

Approximately 0.8 kg/m²/mm.

30 kg

bag

1080 kg

pallet 36 bags

AG
T31



SUPERIOR lightweight gypsum plaster for machine application

Variety B4/50/2

Application

For machine application of gypsum, single coat plaster on walls and ceilings in rooms not exposed to permanent moisture and condensation of steam. Provides an ideal underlay for ceramic lining, decorative plaster, finish coat, wallpaper and paint. Minimum plaster coating thickness: 8 mm. The plaster can also be applied by hand. Plaster is characterized by exceptional ease of processing, stability of operating parameters. Intended for interior use.

Coverage

Approximately 0.8 kg/m²/mm.

30 kg

bag

1080 kg

pallet 36 bags

HYDRATED LIME

WAP
100



Extra white hydrated lime

EN 459-1 CL 90-S

Application

Extra white hydrated building lime is manufactured in the process of hydration ("dry slaking") of very active high-quality ground quicklime. Once slaked, the product has the following properties: considerable size reduction, complete volume stability, high degree of whiteness and large specific surface, which markedly increase its efficiency, plasticity and workability. Extra white hydrated building lime is mainly intended for the manufacture of plaster and masonry mortars. Mortars containing hydrated lime are highly alkaline which is why, due to their high resistance to fungal spread, they are a good solution for buildings with increased sanitary requirements.

Coverage

Depending on particular use.

2 kg

small bag

320 kg

pallet 160 bags

25 kg

bag

750 kg

pallet 30 bags

LOOSE

HYDRATED LIME

25 kg

bag

750 kg

pallet 30 bags

LOOSE

Extra white sharply separated hydrated lime 120%

EN 459-1 CL 90-S

Application

Extra white deeply separated hydrated lime is manufactured in the process of hydration ("dry slaking") of very active high-quality ground quicklime. Once slaked, the product is additionally subjected to separation to obtain a range of unique properties including: considerable size reduction, complete volume stability, high degree of whiteness and large specific surface, which markedly increase its efficiency, plasticity and workability. Extra white deeply separated hydrated lime is intended for the manufacture of plaster and masonry mortars, dry mixtures of construction chemicals and lime-based paints. Due to complete volume stability, the product is recommended for manufacturing gypsum-based mixtures (plasters, gypsum putties, finish coats), while large specific area makes the lime particularly useful as a sorbent in the process of waste gas desulphurisation. Mortars containing hydrated lime are highly alkaline, which is why, due to their high resistance to fungal spread, they are a good solution for buildings with increased sanitary requirements. Extra white deeply separated hydrated lime can also be applied in other industrial processes, such as water and wastewater treatment, as well as in the chemical industry.

Coverage

Depending on particular use.

WAP
120



CEMENT

25 kg

bag

1400 kg

pallet 56 bags

Multi-purpose concrete and mortar cement 32,5 R

CEM II B/V

Application

Multi-purpose high-quality cement intended for basic construction work. Perfect component for:

- * B10 to B37 concretes for use in construction elements, such as strip footings, separating floors, bond beams, lintels, stairs, concrete walls,
- * cement and cement-lime mortars, masonry and plaster mortars prepared on site,
- * levelling screeds and base concretes, in particular applied mechanically,
- * lean concrete and cement sand bedding layers.

Coverage

Depending on particular use.

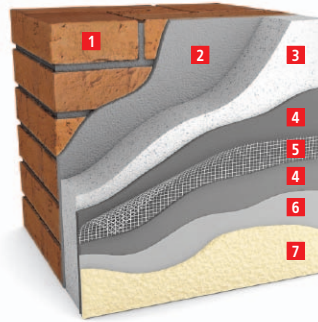
AC
904



THERMAL INSULATION SYSTEMS

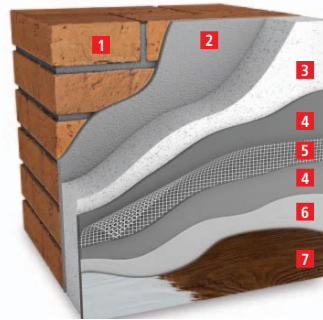
Example of ALPOL EKO PLUS (STANDARD, PREMIUM) thermal insulation system

- 1 Building external wall
- 2 ALPOL AK 525, ALPOL AK 527 or ALPOL AK 534 Styrofoam adhesives (for ALPOL EKO PLUS STANDARD system)
ALPOL AK 530 or ALPOL AK 532 Styrofoam adhesives (for ALPOL EKO PLUS PREMIUM system)
- 3 Styrofoam slab
- 4 ALPOL AK 527 or ALPOL AK 534 mesh adhesives (for ALPOL EKO PLUS STANDARD system)
ALPOL AK 531 or ALPOL AK 532 mesh adhesives (for ALPOL EKO PLUS PREMIUM system)
- 5 ALPOL SW 145 or ALPOL SW 160 fibreglass underplaster mesh embedded in the adhesive
- 6 ALPOL AG 701, ALPOL AG 705 or ALPOL AG 706 plaster primer
- 7 Façade plaster finish: ALPOL AT 350+357, ALPOL AT 370+377, ALPOL AT 380+387 or ALPOL AT 320+336 mineral decorative plasters painted with façade paints: ALPOL AF 640, ALPOL AF 660 or ALPOL AF 680



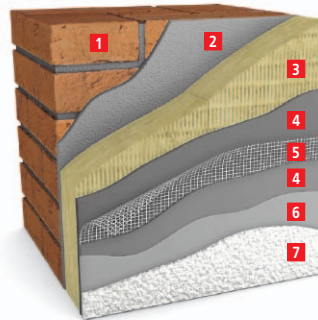
Example of ALPOL EKO PLUS (wood imitation) thermal insulation system

- 1 Building external wall
- 2 ALPOL AK 530 or ALPOL AK 532 Styrofoam adhesives
- 3 Styrofoam slab
- 4 ALPOL AK 525, ALPOL AK 527, ALPOL AK 531 or ALPOL AK 532 mesh adhesives
- 5 ALPOL SW 145 or ALPOL SW 160 fibreglass underplaster mesh embedded in the adhesive
- 6 ALPOL AG 701 plaster primer
- 7 Façade plaster finish: ALPOL AT 319 Mineral white textured plaster
ALPOL AG 701 primer, ALPOL AI 785 colouring impregnating agent



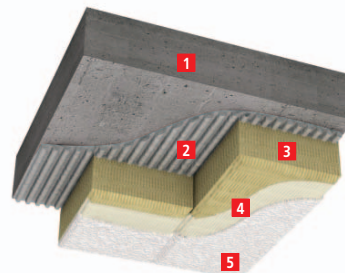
Example of ALPOL EKO PLUS WM thermal insulation system

- 1 Building external wall
- 2 ALPOL AK 531, ALPOL AK 533 or ALPOL AK 534 mineral wool adhesives
- 3 Mineral wool board
- 4 ALPOL AK 531, ALPOL AK 533 or ALPOL AK 534 mesh adhesives
- 5 ALPOL SW 145 fibreglass underplaster mesh embedded in the adhesive
- 6 ALPOL AG 701 or ALPOL AG 706 plaster primer
- 7 Façade plaster finish: ALPOL AT 370+377 or ALPOL AT 320+336 mineral decorative plasters painted with façade paints: ALPOL AF 660 or ALPOL AF 680



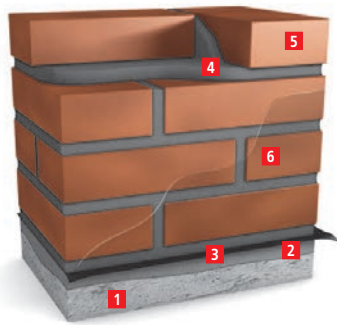
Example of ALPOL STROP WM thermal insulation system

- 1 The ceiling above an unheated room
- 2 ALPOL AK 533 or ALPOL AK 534 mineral wool adhesives
- 3 Mineral wool board
- 4 ALPOL AG 701 primer (only if you use manufacturing unprimed wool and decorative coating in the form of mineral plaster)
- 5 Façade finish: ALPOL AF 641 textured spray paint, mineral decorative plasters: ALPOL AT 320, ALPOL AT 325, ALPOL AT 326, ALPOL AT 330, ALPOL AT 336.



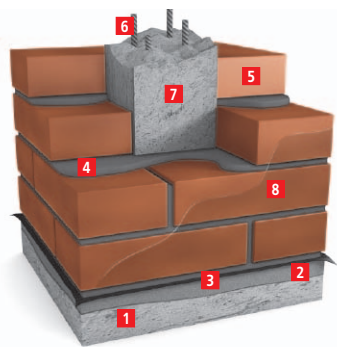
CLINKER NANO-SYSTEMS

Example of CLINKER NANO-SYSTEM – bricklaying with full joints



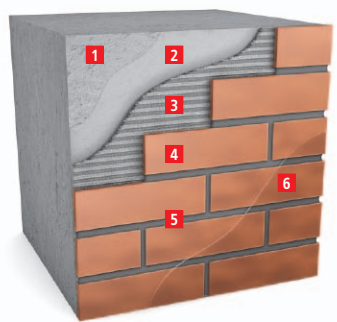
- 1 Substrate concrete
- 2 ALPOL AZ 135 levelling mortar or ALPOL AZ 130 quick-setting mortar
- 3 Waterproofing course (insulation paper)
- 4 ALPOL AZ 120-126 clinker nano-mortar
- 5 Clinker brick
- 6 ALPOL AI 780 nano-impregnating agent for mineral surfaces

Example of CLINKER NANO-SYSTEM – erecting fencing posts



- 1 Substrate concrete
- 2 ALPOL AZ 135 levelling mortar or ALPOL AZ 130 quick-setting mortar
- 3 Waterproofing course (insulation paper)
- 4 ALPOL AZ 120-126 clinker nano-mortar
- 5 Clinker brick
- 6 Reinforcement rods
- 7 ALPOL AZ 129 clinker nano-concrete
- 8 ALPOL AI 780 nano-impregnating agent for mineral surfaces

Example of CLINKER NANO-SYSTEM – fixing and grouting clinker tiles



- 1 Substrate (plaster, concrete or waterproofing system)
- 2 ALPOL AG 707 primer for waterproofing systems
- 3 ALPOL AK 518 nano-adhesive for clinker
- 4 Clinker tile
- 5 ALPOL AZ 150-156 clinker nano-grout
- 6 ALPOL AI 780 nano-impregnating agent for mineral surfaces



NanoTechnology

salt efflorescence build-up prevention



The only patent-protected
clinker product line in Europe



TOP BUILDER 2009 AWARD

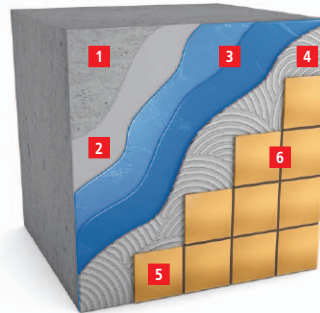


Gold Medal QI 2012

WATERPROOFING SYSTEMS

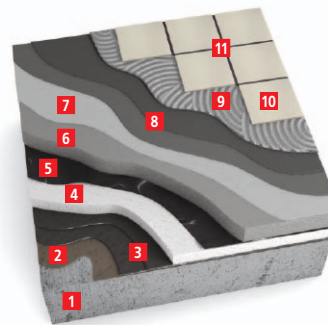
Example of ALPOL HYDRO PLUS waterproofing system

- 1 Substrate
- 2 ALPOL AG 707 primer for waterproofing systems
- 3 ALPOL AH 751 Waterproofing membrane (three layers)
- 4 ALPOL AK 511 flexible adhesive for porcelain tiles, ALPOL AK 512 quick-setting adhesive for porcelain tiles or ALPOL AK 513 flexible tile adhesive (for vertical and horizontal substrates), ALPOL AK 516 liquefied quick-setting thin-layer adhesive or ALPOL AK 517 liquefied quick-setting medium-thick-layer adhesive (for horizontal substrates)
- 5 Ceramic tile
- 6 ALPOL ELITE AS E51-E65 flexible grout



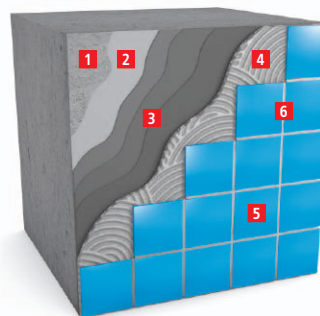
Example of ALPOL HYDRO PLUS T waterproofing system

- 1 Structural slab
- 2 ALPOL AH 740 bitumen waterproofing and priming emulsion
- 3 ALPOL AH 741 underlay torch-on membrane or bitumen waterproofing compound (two layers)
- 4 Extruded Styrofoam
- 5 PE membrane
- 6 ALPOL AP 400 underlay floor from 20 to 100 mm
- 7 ALPOL AG 707 primer for waterproofing systems
- 8 ALPOL AH 752 waterproof mortar for terraces and balconies (two layers)
- 9 ALPOL AK 516 liquefied quick-setting thin-layer adhesive or ALPOL AK 517 liquefied quick-setting medium-thick-layer adhesive or ALPOL AK 512, ALPOL AK 513, ALPOL AK 514, ALPOL AK 515, ALPOL AK 518
- 10 Ceramic tile
- 11 ALPOL ELITE AS E51-E65 flexible grout



Example of ALPOL AQUA PLUS waterproofing system

- 1 Concrete substrate
- 2 ALPOL AG 707 primer for waterproofing systems
- 3 ALPOL AH 753 waterproof mortar for swimming-pools (three layers) or ALPOL AH 754 Waterprof mortar for water and sewage tanks (three layers)
- 4 ALPOL AK 512, ALPOL AK 513, ALPOL AK 514, ALPOL AK 515 flexible adhesive or ALPOL AK 516 liquefied quick-setting thin-layer adhesive or ALPOL AK 517 liquefied quick-setting medium-thick-layer adhesive (for horizontal substrates)
- 5 Swimming pool ceramic tile
- 6 ALPOL AH 760 grey epoxy grouting mortar



ALPOL COLOR colour chart of plaster and paints for interiors and façades

SAHARA

S 1000*	S 1005*	S 1010*	S 1015*	S 1020*	S 1025*	S 1030*
S 1035*	S 1040*▲	S 1045*	S 1050*▲	S 1055*▲	S 1060*	S 1065*▲
S 1070****	S 1075*	S 1080*	S 1085*▲	S 1090*	S 1095*	S 1100*
S 1105**	S 1110**▲	S 1115**	S 1120****▲	S 1125****	S 1130***	S 1135**△▲
S 1140***△▲	S 1145***△▲	S 1150*	S 1155*▲	S 1160*▲	S 1165*▲	S 1170**▲
S 1175**▲	S 1180**▲	S 1185***▲	S 1190***△▲	S 1195***△▲	S 1200***▲	S 1205**
S 1210**	S 1215****	S 1220****	S 1225*	S 1230*	S 1235*	S 1240*△▲
S 1245*	S 1250*	S 1255*	S 1260*	S 1265***	S 1270****△▲	S 1275****△▲
S 1280****△▲	S 1285****▲	S 1290****▲	S 1295****▲			

COLORADO

C 2000*	C 2005*	C 2010*▲	C 2015*	C 2020*	C 2025*	C 2030*
C 2035**	C 2040*	C 2045**▲	C 2050**	C 2055**	C 2060****△▲	C 2065****△▲
C 2070****	C 2075*	C 2080*▲	C 2085*	C 2090*	C 2095*	C 2100*
C 2105*	C 2110*	C 2115*	C 2120*	C 2125*	C 2130*	C 2135*
C 2140**	C 2145****△▲	C 2150*	C 2155*	C 2160*	C 2165*	C 2170*△▲
C 2175*	C 2180*	C 2185*	C 2190*	C 2195*	C 2200*	C 2205*
C 2210*	C 2215**	C 2220****△	C 2225*	C 2230*	C 2235*	C 2240*
C 2245*	C 2250**	C 2255****	C 2260****	C 2265**	C 2270****	C 2275****
C 2280****	C 2285**	C 2290****	C 2295**△▲			

* I price group, ** II price group, *** III price group, **** IV price group,

△ The color is not available for silicate and silicone plaster. ▲ The color is not available for silicate paints.

Information about the IV price group are set out in the table at the end of the price list. It is also possible to make an individual valuation on special request.

WARNING! The differences in color and grain size are permissible. The product should be selected on the basis of ALPOL COLOR chart..

ALPOL COLOR colour chart of plaster and paints for interiors and façades

GANGES						
G 3000*	G 3005*	G 3010*	G 3015*	G 3020*	G 3025*	G 3030*
G 3035**	G 3040***	G 3045**	G 3050****	G 3055**	G 3060****	G 3065***
G 3070***	G 3075*	G 3080*	G 3085*	G 3090*	G 3095*	G 3100*
G 3105**	G 3110**	G 3115*	G 3120**	G 3125**	G 3130***	G 3135****
G 3140****	G 3145****	G 3150*△▲	G 3155*	G 3160**	G 3165**	G 3170****
G 3175***	G 3180***	G 3185***	G 3190*	G 3195***	G 3200***	G 3205****
G 3210****	G 3215***	G 3220**▲	G 3225*	G 3230*	G 3235*	G 3240*
G 3245*	G 3250*	G 3255****	G 3260****	G 3265****	G 3270****	G 3275****
G 3280****	G 3285****	G 3290****	G 3295****	G 3300*	G 3305*	G 3310*
G 3315*	G 3320**	G 3325*	G 3330*	G 3335*	G 3340**	G 3345****
G 3350****	G 3355****	G 3360****	G 3365****	G 3370****▲		

TYBET						
T 4000*	T 4005*	T 4010*	T 4015*	T 4020*	T 4025*	T 4030*
T 4035**	T 4040*	T 4045***	T 4050****	T 4055****	T 4060****	T 4065****▲
T 4070****▲	T 4075*	T 4080*	T 4085*	T 4090*	T 4095*	T 4100*
T 4105*	T 4110*	T 4115*	T 4120**	T 4125*	T 4130*	T 4135*
T 4140**	T 4145****▲	T 4150*	T 4155*	T 4160*	T 4165*	T 4170*
T 4175*	T 4180*	T 4185*	T 4190*	T 4195*	T 4200*	T 4205**
T 4210***	T 4215**	T 4220****				

VULCANO						
V 5000****△▲	V 5005****△▲	V 5006****	V 5007****	V 5008****	V 5014*	V 5015*
V 5016****	V 5017****	V 5018****	V 5020****	V 5025****△▲	V 5030****	V 5031****
V 5032****△▲	V 5035* △▲	V 5040****	V 5050*△▲	V 5051*△▲	V 5052*△▲	V 5055****
V 5060**△▲	V 5065****▲	V 5066****	V 5067****	V 5070***	V 5075***	V 5080***
V 5085***	V 5090****▲	V 5091*△▲	V 5095*△▲	V 5100****△▲	V 5105****△▲	V 5110****△▲
V 5115****△▲	V 5120****△▲	V 5125****△▲	V 5130****△▲	V 5135****△▲	V 5140****△▲	V 5145****△▲
V 5150****△▲	V 5155****△▲	V 5160****△▲				

ALPOL MOSAIC colour chart for natural and stained mosaic plaster

Natural mosaic plaster – 1.2 mm aggregate

RODOS

R 005



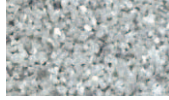
R 010



R 016



R 020



R 025



R 030



Natural mosaic plaster – 2.5 mm aggregate

R 035



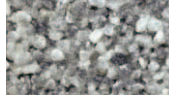
R 040



R 046



R 050



R 055



R 060



Natural mosaic plaster – 2.5 mm aggregate

FLORES

F 005



F 010



F 015



F 020



F 025



F 030



F 035



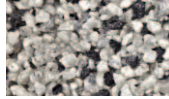
F 040



F 045



F 050



F 055



F 060



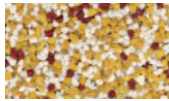
Coloured internal mosaic plaster – 1.2 mm aggregate

HIUMA

H 005



H 010



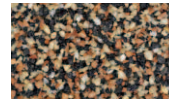
H 015



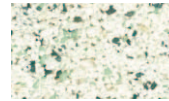
H 020



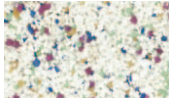
H 025



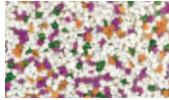
H 030



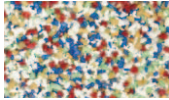
H 035



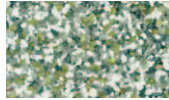
H 040



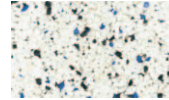
H 045



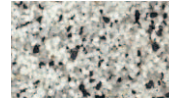
H 050



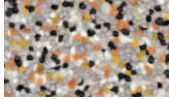
H 055



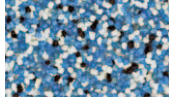
H 060



H 065



H 070



H 075



Coloured mosaic plaster – 2.5 mm aggregate

BIOKO

B 005



B 010



B 015



B 020



B 025



B 030



B 035



B 040



B 045



B 050



B 055



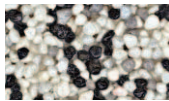
B 060



B 065



B 070



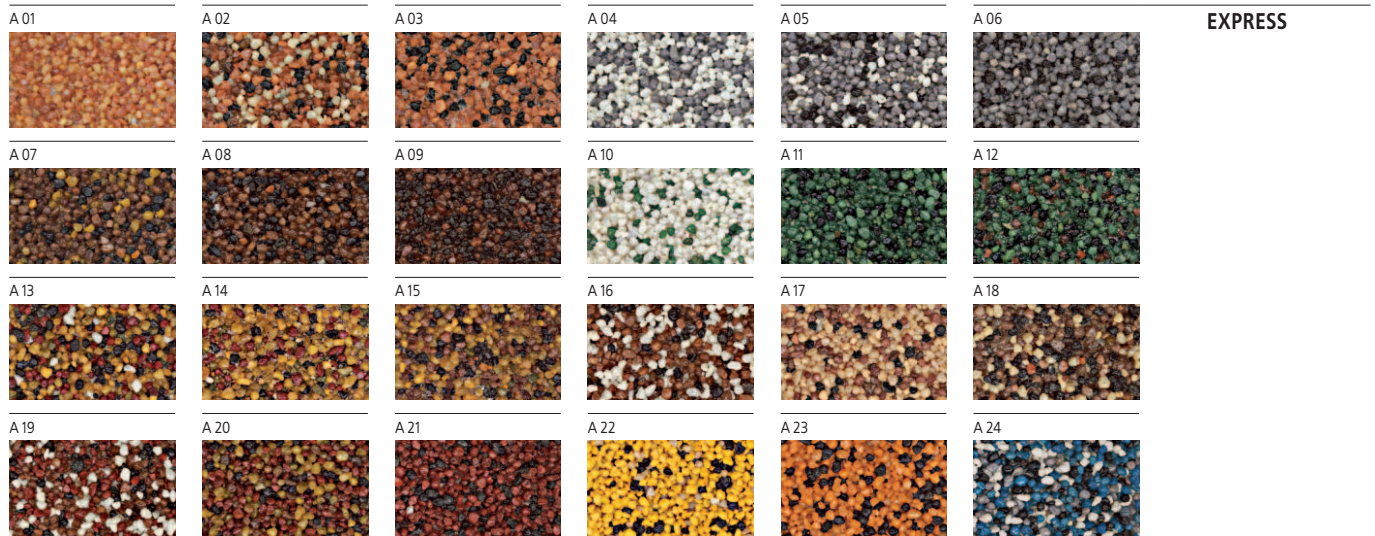
B 075



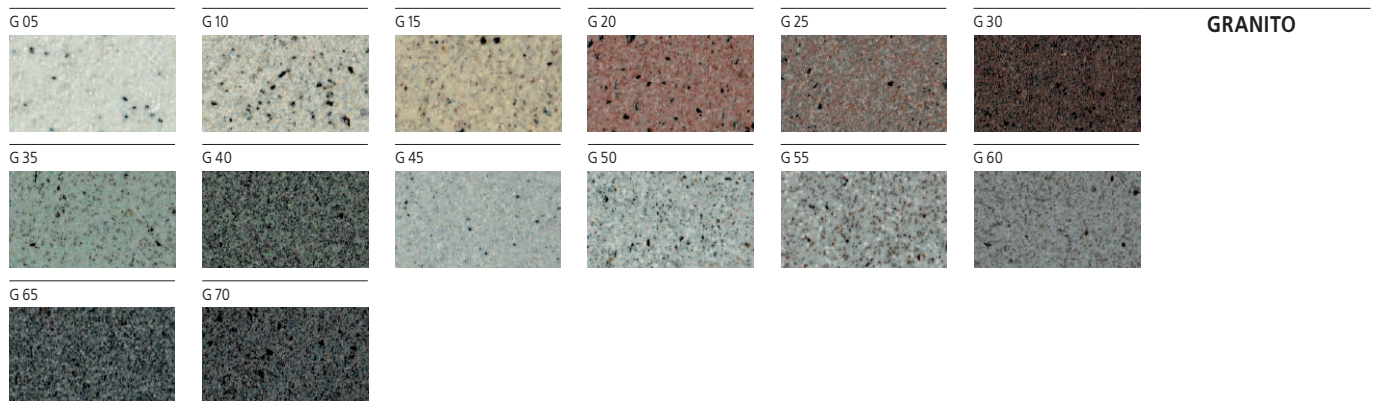
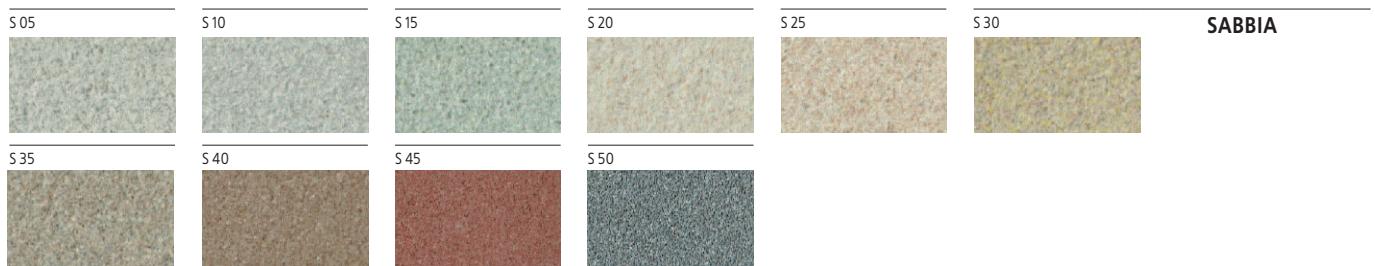
WARNING! The differences in color and grain size are permissible. The product should be selected on the basis of ALPOL MOSAIC chart.

ALPOL EXPRESS colour chart for coloured mosaic plaster

Coloured mosaic plaster – 1.6 mm aggregate



CREATIVO chart



ALPOL AI 785 colouring impregnating agent chart



WARNING! The differences in color and grain size are permissible. The product should be selected on the basis of ALPOL charts.



ALPOL GIPS Sp. z o.o., Fidor, 26-200 Końskie
Ph. +48 41 372 11 00, Fax +48 41 372 12 84
E-mail: alpol.gips@alpol.pl

Customer Service Department:
Ph: +48 41 372 11 06, +48 41 372 11 09, fax +48 41 372 11 13;

Product and Application Consultancy Department:
Ph: +48 41 372 11 22



A

PRO